

At a Glance



"THE MARRIAGE of Bette and Boo" will feature Wayne State College performers Pat Spencer and Charlotte Macke, among others.

'Bette and Boo'

WAYNE - The Wayne State College Theatre Department, under the direction of Dr. Andre Sedriks, will present "The Marriage of Bette and Boo" Feb. 24-26 on campus.

Performance times are Sunday, Feb. 24 at 2 p.m., and Monday and Tuesday, Feb. 25-26 at 8 p.m. Performances are in the Brandenburg Education Building's Ley Theatre.

The play is a human comedy with dark overtones. It examines the ravages of alcoholism on family life and marriage due to the rigidity of social structures, according to Sedriks.

Tickets are \$3 per person and they will be sold at the door.

Safety seminar

AREA - High school sophomores or juniors interested in attending the Citizenship/Safety Seminar can pick up an application at the Wayne County Farm Bureau office.

This seminar will be held March 17-19 in Aurora, Neb.

Deadline for the applications is Feb. 20. Participants do not have to be Farm Bureau members to attend.

Farm award

AREA - The Knights of Ak-Sar-Ben and the Nebraska Association of Fair Managers have announced that nominations for the 35th annual Nebraska Pioneer Family Award awards are being accepted.

The program honors farm families in Nebraska whose land has been owned by the same family for 100 years or more.

All nominations must be submitted by May 1 to the secretary of the local county fair board. Nomination forms are available from County Fair Secretary Leland Herman of rural Wayne.

Blood bank

WAYNE - The Siouxland Blood Bank will be accepting donations at Providence Medical Center on Thursday, Feb. 28 from 9 a.m. to 3 p.m.

Big band dance

WAYNE - Area residents will have the opportunity to dance to the music of the big band era when the Wayne State College Jazz Band, under the direction of Wayne High School director Brad Weber, will perform Feb. 22 at the Wayne City Auditorium.

Admission is \$3 for singles and \$5 for couples. The dance will be held from 8:30 p.m. to 11:30 p.m.

Book complete

WAYNE - Dr. Donald W. Whisenhunt, provost and vice president for academic affairs at Wayne State College, has announced that volume 13 of Encyclopedia USA has been published.

Volume 13 is the second volume in the series edited by Dr. Whisenhunt and includes articles contributed by Wayne State faculty Dr. Christopher Bonds, Dr. Larry Harris and Dr. P.J. Powers.

A total of 76 faculty from across the United States contributed a total of 109 articles for the volume.

Building's future up to town

By Mark Crist
Managing Editor

HOSKINS - After the closure of the school last year, Hoskins residents are finding that the former high school might serve a new purpose to the community. What that purpose will be remains open for discussion.

The Hoskins Village Board purchased the old schoolhouse two weeks ago from the Norfolk Public Schools for \$1. Since the school's closure a year ago, and the transfer of it over to the Norfolk system, it has remained empty except for occasional security and maintenance checks.

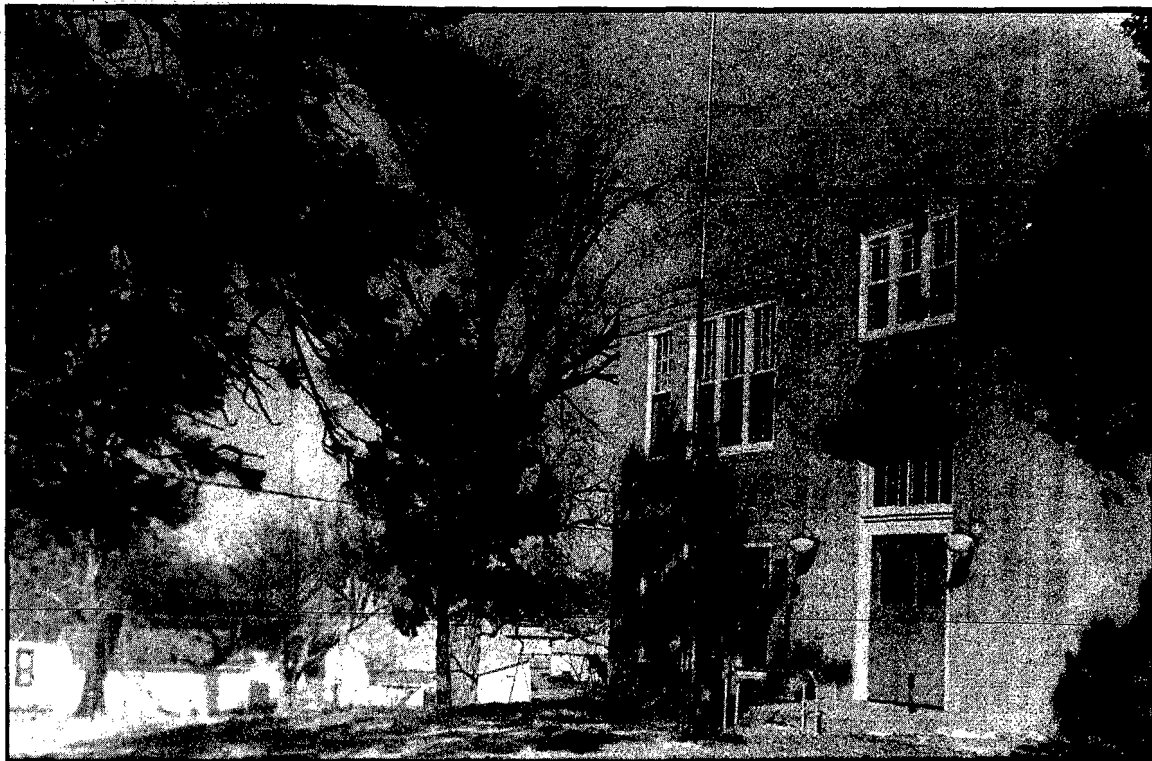
Although ideas are being tossed around, and the Hoskins board is looking for input from the community. The building, located on the southeast edge of town, could house a variety of things, including a community center or business offices.

"We definitely think we would like to use the grounds as a park," said Hoskins village Clerk Shirley Mann. "The village currently has a sized down park at the softball diamond and horse park but it is not that large."

THE BUILDING itself has a large assembly room and two sizable classrooms on its upper level and one classroom and a mini gym on its lower level. Although the building is empty, it is structurally sound.

While nothing has been set in stone, the building has development potential.

"We're going to have to have public input since it's a community project," said Hoskins Mayor Pat Brudigan. "We've tossed around some ideas of making it a community center, which could house a museum, a library, a youth center, a senior center and a fitness center with the floor space we have in the gym, or we could turn it into office space for any prospective business.



THE HOSKINS VILLAGE BOARD recently repurchased the schoolhouse from the Norfolk Public Schools for \$1. Although nothing is set in stone for the building's future, the village board is open to suggestions.

It all depends on what the public wants done with it."

WHEN THE SCHOOL was built in the early 1940s, it was made completely of concrete. Since that time, it has had some updated work done to it and overall it's in good condition.

If a business or businesses do come in, the building's design offers ideal office space, according to officials from the Nebraska Economic Development Corporation, which makes connections with businesses and available office space.

"We've been told that telemar-

keting companies are always looking for space, although the NEDC office doesn't have anything lined up for us," Mann said.

"We would welcome professional offices. With a professional business, it would increase the tax value of the property and that, in

turn, would benefit the community."

The village board is taking a conservative approach to potential projects.

"We're not going to jump into anything unless something really good comes along. We don't plan to rush into anything," Mann said.

Program geared to uplift interaction between community, African culture

WAYNE - A special event titled "A Celebration of African Americans" will be held at Wayne State College Feb. 27-28. It is sponsored by the Center for Cultural Outreach at Wayne State, and the public is invited to attend all activities.

"This is a two-day festival focusing on the accomplishments of Black teachers, scholars, artists and musicians from a contemporary and historic perspective," says Dr. Beverly Soll, director of the center.

"The goal is to achieve interaction between guests and our collegiate and geographic community and to create positive interaction between racial groups on campus through the pursuit of common goals and shared activities and responsibilities relating to the event."

Activities for Wednesday, Feb. 27 begin at 12:30 p.m. with a lecture by George Garrison, head of Black studies at the University of Nebraska-Omaha. The lecture is titled "African History and Culture: From Ancient Egypt to Ancient America," and will be held in the Student Center's North Dining Room.

At 3 p.m., an exploration of poems by Black men and women, including solo and group readings, dialogues and poems to which dance and percussion improvisation have been added, will be presented by Wayne State students in the Student Center's North Dining Room.

Oscar Pulliam, art instructor at Boys Town High School, will present a painting demonstration at 5:30

p.m. in the North Dining Room. Guests will have the opportunity to watch the artist and discuss his creative processes with him.

Wednesday concludes with the movie "Miles of Smiles/Years of Struggle" in Ley Theatre at 7 p.m.

A coffee and gallery walk at 10 a.m. on Thursday will give the guests the opportunity to visit with Bertha Calloway, director of the Great Plains Black Museum in Omaha, prior to her slide presentation at 11 a.m. The coffee and slide presentation "Black Women of the Great Plains" will be held in the North Dining Room.

The public is invited to attend a rehearsal at 12:30 p.m. in Ley Theatre for the evening's 8 p.m.

See CULTURE, page 4

Bulgarian National Folk Ensemble slated to give performance in Wayne on March 5

WAYNE - Northeast Nebraskans are encouraged to attend the March 5 performance of PIRIN Bulgarian National Folk Ensemble, the featured event in Wayne State College's Black & Gold Series.

Performance time is 8 p.m. in the college's Rice Auditorium.

Under the artistic direction of Kiril Stefanov, the 75-member ensemble is composed of dancers, orchestra and the Stefanov Bulgarian Women's Chorus. The 1990-91 season marks its third North American tour.

"This is one of the largest theatrical showcases ever to appear in the Black & Gold Series," says James Day, music professor and director of the Series. "The Ensemble has performed in many major cities including the new fine arts center in Trenton, N.J., and the Naples Center for the Performing Arts in Naples, Fla."

Artists are adorned with exotic costumes of many designs which display the folk costumes of yesteryear and today. Their apparel constitutes a visual feast of silks and embroideries, headpieces, jewelry, vests, caps and pantaloons.

The fiery spins and energetic leaps of the male dancers, lyrical movements of the women and the clarity of the chorus's soloists are complemented brilliantly by the unique orchestra. The folkloric instrumentation of the kaval, lute, rebec and bagpipe further adds to the atmosphere created by PIRIN's performances.

It's garnered international acclaim from more than 20 countries on four continents. Rome's L'Unita



THE BULGARIAN NATIONAL Folk Ensemble will come to Wayne State College March 5 as part of the Black and Gold Series. Artists performing various dance routines will adorn a variety of exotic costumes native to their homeland. In addition, many of the dances feature a variety of energetic leaps. For more information, contact Wayne State College.

hails "a first class performance, rich in color and most impressive," while the Washington Post says "a constant surge of kinetic excitement."

PIRIN melds the rich history of Bulgaria dating back through the Thracian, pre-Christian era to the present.

To celebrate the 1,300th anniversary of Bulgaria's establishment, the country has sent PIRIN Bulgarian National Folk Ensemble abroad to share its artistic treasures with the rest of the world.

Tickets, \$5 for adults and \$3 for children high school age or younger, went on sale Thursday, Feb. 14. They may be purchased in the business office of the Hahn Administration Building, or by sending payment and a stamped, self-addressed envelope to Black & Gold Tickets, c/o Hahn Building, Wayne State College, Wayne, NE 68787. Seating capacity is limited.

For more ticket information, call (402) 375-7517.



Photography: Mark Crist

Learning about safety

STUDENTS FROM SEVERAL rural schools got to hear about the importance of safety. Nebraska State Trooper Gary Kinney talks to students with a little help from Gus the Bus operated by Trooper Terry Kenny. Attending the lesson Friday were students from district 25, where the seminar was held, district 15 in Thurston County, district 15 in Wayne County and district 5 in Wayne County.

Chamber announces plans for teacher BIE day Feb. 22

WAYNE - The Wayne Area Chamber of Commerce Education Council has announced the first BIE (Business, Industry and Education) Day in Wayne on Friday, Feb. 22.

BIE Day is a one-half day when Wayne Public School educators will visit various businesses of their choice to gain insight about the role that businesses play in the Wayne community.

The goal for the program is to promote public relations between the school and business community, thus creating a stronger alliance, according to Chamber officials.

Nine Wayne businesses will be participating in the BIE day. Businesses participating include KTCH radio, Trio Travel, Wayne Airport Authority, Great Dane Trailers, Restful Knights, Region IV, Heritage Homes, Providence Medical Center and First National-Omaha Service Center.

All businesses and educators participating in the BIE Day will meet at the Black Knight for coffee and treats from 3:45 p.m. to 5 p.m. Feb. 22.

Eat 'hearty'

During February — Heart Month — Saint Joseph Hospital in Omaha offers the following tips for "hearty" eating.

—Should you look for foods labeled "no cholesterol?" Not necessarily. A product can contain no cholesterol and still be high in saturated (or hydrogenated) fat which will raise your blood cholesterol. Check labels. Look for food that contains more unsaturated fat than saturated fat. Try to restrict your total fat intake to 30% of calories. And eat less than 300 milligrams of dietary cholesterol a day.

—Limit your intake of red meat; select lean cuts.

—Eat more poultry and fish.

—Enjoy fruits and vegetables. They contain no cholesterol and little saturated fat.

—Avoid high-fat dairy products such as whole milk and most cheeses. Substitute skim milk, low-fat cottage cheese and low-fat yogurt.

—Use margarine instead of butter (0 milligrams cholesterol vs. 36 milligrams).

—Limit yourself to two egg yolks a week. Substitute two egg whites for one egg yolk in cooking.

—Change your oil. Avoid coconut, palm and palm kernel oils and vegetable shortening. Switch to corn, safflower, sunflower, soybean, olive or canola oils.

—Add oat bran, lentils and apples to your daily diet. They may reduce cholesterol levels in your blood.

—Read labels. They should tell you the cholesterol and saturated fat content.

—Know your cholesterol count. A level below 200 is considered ideal. But talk to your doctor about what the numbers mean for you.

Engagements

Ludeking-Roth

Making plans for a June wedding are Kelly Jo Ludeking, daughter of Richard and Lois Ludeking of Rock City, Ill., and Craig Warren Roth, son of Ned and Sharon Roth of Brodhead, Wisc.

The bride-elect is the granddaughter of Ruth Fleer of Wayne. She is a graduate of Dakota High School and is employed at Newell Co.

Her fiance graduated from Brodhead High School in 1981 and is employed by Union Coop Association in Evansville, Wisc. He also is owner and operator of a farrow-to-feeder pig operation.

The couple will be married June 1 at St. Paul, UCC Church, Davis, Ill.

Hansen-Kostal

Tania Marie Hansen and Bernie John Kostal have announced their engagement.

The bride-elect is the daughter of Darlene Bennett of Waterbury and Robert Hansen of Sioux City. She is a graduate of Allen High School and Western Iowa Tech, Sioux City, and is employed as a registered nurse at the South Dakota Human Services Center in Yankton.

Her fiance is the son of Joseph Kostal and the late Hattie Kostal. He is a graduate of Tyndall High School, Tyndall, S. D., and is engaged in farming near Tyndall.

The couple plans an April 20 wedding in Tyndall.

New Arrivals

BOWDER — Dale and Lynn Bowder, Lincoln, a daughter, Kyleah Diana, Jan. 21 in Lincoln. Kyleah joins a brother Dane, age two. Grandparents are Lester and Greta Grubbs, Winside, DeLores Penfield, Omaha, Rollie Penfield, Rawlins, Wyo., and Gary Bowder, Sioux City. Great grandparents are Howard and Marian Iversen, Winside, and Effie Bowder, Wakefield.

McALISTER — Calvin and Salena McAlister, Seattle, Wash., a daughter, Kaitlin Rose, 7 lbs., 14 oz., Jan. 13. Grandparents are Andrea Gutierrez and Joe Gutierrez of Bothell, Wash., and Earl and Lois Echtenkamp of Wayne. Great grandparents are Mrs. Ernest Sellin, Norfolk, and Mr. and Mrs. George Wittler, Hoskins.

SELLIN — Mr. and Mrs. Dave Sellin, Norfolk, a son, Jared Dean, 9 lbs., 14 oz., Feb. 12, Lutheran Community Hospital, Norfolk. Jared joins a sister, two-year-old Heather. Grandparents are Mr. and Mrs. Duane Sellin, Norfolk, and Mr. and Mrs. Don Johnson, Hoskins. Great grandparents are Mrs. Ernest Sellin, Norfolk, and Mr. and Mrs. George Wittler, Hoskins.



Photography: LaVon Anderson

Say cheese please

VIC REYNOLDS, ASSOCIATE Professor of Fine Arts at Wayne State College, presented a photography workshop recently for second grade students in Pat Straight's class at West Elementary School in Wayne. In the photo at left, Crystal Thiele takes a scenery picture using a homemade camera fashioned from an empty oatmeal container. In the top photo, Jennifer Wattler, with the assistance of aide Denise Fredrickson, takes a picture of her classmates and teacher Mrs. Straight. Reynolds also spoke to the students and set up a darkroom so the children could see the pictures they took using the oatmeal containers.

WELCA meets at St. Paul's

St. Paul's Women of the Evangelical Lutheran Church in America (WELCA) met Feb. 13 at the church with 22 members and one guest, Madge Brullat, attending.

Cleva Willers opened the meeting with a prayer for children.

Christian action reported mailing one baby card, six sympathy cards and 12 get well cards.

Thank you notes were received from Helen Weible, Ellen Hansen, Rich Davis, Iona Stern, the Budd Bornholt family, Vera Peterson and Craig Stutheit.

Joye Magnuson thanked the group for her card and Joy Gettman thanked members for their prayers and card. A thank you also was received from Grace Millie for the cookies she received.

A letter was read from DeAnn Behlers concerning serving supper on March 8 for the Concordia College choir of Moorhead, Minn. The group will perform that evening at 8 p.m. at Wayne State College.

Cleva Willers appointed Group 1 to assist with the supper at Redeemer Lutheran Church.

MRS. WILLERS reported on the

Cluster 4 meeting held Jan. 24 at Wakefield. Attending with Mrs. Willers was Ardye Reeg.

It was announced the Spring Gathering will be held April 11 at Grace Lutheran Church in West Point.

World Day of Prayer will be observed March 1 at Redeemer Lutheran Church in Wayne.

Loretta Baier and Janet Sievers are in charge of the mother-daughter banquet in April.

Quilts for children were discussed and it was suggested that a lamp be purchased for the piano.

LORETTA BAIER presented the program, entitled "Women Becoming." Readers were Joye Magnuson and Dorothy Aurich, with the entire group taking part. Madge Brullat led the singing of three hymns.

Hostesses were Dorothy Aurich and Ruth Fleer, in the absence of Marilyn Carhart.

Ruth Baier announced that Gil Haase will present the program at the March 13 birthday party. Hostesses will be members of Group 3.

ALTAR GUILD met Feb. 7 at the church. The next meeting will be March 7 at 2 p.m. Mable Petersen will have devotions and Ruth Fleer will serve as hostess.

Seven members and one guest attended the Feb. 1 meeting of Esther Circle. Vera Peterson will be hostess for the March 6 meeting at 9 a.m. and Leone Jager will present the lesson.

Sewing group met Jan. 24 and tied 14 lap robes and one quilt. The group will meet again on Feb. 28 at 9:30 a.m., with a potluck luncheon at noon.

Naomi Circle will meet Feb. 21 at 2 p.m. Evie Schock will have the lesson and Naomi Isebrand will be hostess.

Carolyn Vakoc, leader of the Evening Group, and 12 women cleaned the parsonage. They will meet Feb. 25 at 7:30 p.m. with Lila Splittgerber as hostess and Elizabeth Anderson as lesson leader.

Mary Martinson and Joye Magnuson made Valentines for Altar Guild and Esther Circle shut-ins.

Program focuses on season of Lent

Ellen Heinemann presented a program, entitled "What to Give Up for Lent," when Grace Lutheran Ladies Aid met Feb. 13. She closed with the Lord's Prayer and table prayer.

Attending the meeting were 39 members and guests Pam Ekberg and Alice Roeber. Hostesses were Ellain Vahlkamp, Bernita Sherbahn and Esther Baker.

Mrs. Heinemann also had opening devotions, entitled "I Am the Bread of Life."

DELORES Utecht reported on women who visited and sent cards to the sick and shut-ins. Leora Austin purchased flowers for Melvy Meyer and Cora Miller.

Birthday cards were signed by members for Florence Wittig and Agatha Krallman.

Correspondence was read from Flora Bergt, Melvy Meyer, Verna Bargholz, Frances Bak and Eva Malchow.

Roberta Oswald will write to Mike Erickson and Lena Fuelberth to Duane Fahr.

The sewing committee reported making more quilts.

Joann Temme attended the executive meeting held Jan. 28 in Laurel. It was announced the Spring Workshop will be held April 16 at St. John's, Newcastle.

SEATED AT the birthday table were Cynthia Rethwisch, Esther Hansen, Florence Rethwisch, Clara Echtenkamp, Ruth Victor and Frances Samuelson.

Hostesses for the March meeting will be Elsie Hailey, Dorothea Schwanke and Irene Lutt.

Senior Citizens

Congregate Meal Menu

(Week of Feb. 18-22)

Monday: Center closed in observance of President's Day.

Tuesday: Beef stew, top hat salad, muffin, cookies.

Wednesday: Monthly potluck meal.

Thursday: Scalloped chicken, broccoli with cheese sauce, lettuce with dressing, white bread, pears.

Friday: Cod, scalloped potatoes, beets, banana gelatin, whole wheat bread, plums.

Program to focus on couple relationships

The University of Nebraska Extension is offering a class, entitled "Couple Relationships," on Tuesday, Feb. 26 at 1:30 p.m. in the Wayne County Courthouse meeting room.

The class is part of the home extension club program, but is open to the public.

"Once the honeymoon is over, married life is seldom smooth sailing," said Lynda Cruickshank, extension agent-4-H and home economics. "No matter what causes conflict — money, sex, in-laws — all must navigate their way through some tough areas of disagreement.

Cruickshank said the way couples handle troublesome discussions is a key to how happy their marriages are. "Couples who can discuss their problems and reach mutually agreeable conclusions without feeling hurt or blaming each other are likely to have the happiest marriages."

The "Couple Relationships" class will teach principles of communication in making a positive outcome to conflict. Couple violence and abuse also will be discussed.

The class will be taught by Carol Larvick, extension home economics located in Dakota County.

Briefly Speaking

District 57 honor roll released

WAYNE — Wayne County School District 57 has released the names of sixth, seventh and eighth grade students named to the first semester honor roll.

Semester honor roll students include sixth graders Richard Siefken and Kate Salmons, seventh graders Karie Lutt, Matt Niemann and Brent Meyer, and eighth graders Wendy Beiermann and Angie Siefken.

Mom's Group schedules meeting

WAYNE — Kate Lutt will present a program, entitled "Home Decorating on a Shoestring," at the Feb. 21 meeting of Mom's Group. All area mothers are invited to attend the meeting from 9:30 to 11 a.m. in the social hall of Redeemer Lutheran Church in Wayne.

Babysitting will be provided in the downstairs fellowship hall and children should be checked in at 9:15 a.m. There is a \$2 charge per child age two and up (\$1 for each additional child), and a \$3 charge per child under age two. Infants and nursing babies are welcome to attend the meeting. Mothers are asked to bring toys for their children to play with.

Persons wishing additional information about Mom's Group are asked to call Zoe Vander Weil, 375-1884.

Lesson focuses on beauty tips

WAYNE — Ella Lutt presented a lesson on beauty tips for 12 members of Merry Mixers Club when they met Feb. 12 with Pauline Morse as hostess. Roll call was answered with a favorite bar of soap.

Elaine Vahlkamp led group singing of "Billy Boy." Plans were discussed for the annual dinner party scheduled March 3 at 6 p.m. at Geno's Steakhouse.

The next regular meeting will be with Esther Hansen on March 12 at 1:30 p.m.



Mr. and Mrs. Jason Trenhaile

Boehmer-Trenhaile wed in St. Helena

The marriage of Phyllis Boehmer to Jason Trenhaile was solemnized in Feb. 9 rites at St. Helena with the Rev. Frank Partusch officiating.

Parents of the couple are Richard and Sharon Boehmer of Newcastle and Dale and Linda Trenhaile of St. Helena.

The bride received her BAE degree from Wayne State College and is employed by Papillion LaVista Public Schools in Omaha.

The bridegroom, a graduate of Northeast Community College, Norfolk, is employed as an electrician for Brase's Electrical Contracting Corp. in Omaha.

The newlyweds are making their home in Omaha.

HONOR attendants for the couple were the bride's sister, Angie Boehmer of Newcastle, and the bridegroom's brother, Matthew Trenhaile of St. Helena.

Bridesmaids were Shannon Muhs of Lincoln, Kelli Thomas of St. Louis, Mo. and Becky Bradford of Wayne, and groomsmen were Steve Wieseler of Wynot, Dean Wojcik of Lindsay and Bill Trenhaile of Neligh.

Flower girl was Laura Guenther of Yankton, S. D., and ring bearer was Brett Wiedenfeld of Newcastle.

Ushering guests into the church were Corey Stratman of Hartington, Bob Heine and Chris Wiedenfeld, both of Lincoln, and Dan Wiedenfeld of Hartington.

Musicians were Doyle Anderson of Yankton, S. D., Mary Jean Klug of St. Helena and Jennifer Trenhaile of Neligh.

The bride's personal attendant was Robin Sobansky, and pinning flowers were Amy Boecker and Jo Trenhaile. All are of Wayne.

A RECEPTION followed at the fire hall in Newcastle with Mark and Patty Wiedenfeld of Newcastle and Perry and Julie Trenhaile of Bloomfield serving as hosts. Seated at the guest book were Laura Beck of Omaha and Roni Johnson of Wayne.

Serving cake were Janice Buschkamp of Crofton and Bernice Schneider, and pouring punch were Laura Guenther of Yankton, S. D. and Kay Heine of St. Helena.

Trojans topple Homer by 10

HOMER - As sweet as a win can be, that's just what the Wakefield Trojans got Friday night when they traveled to Homer. Wakefield came away from the game with a 69-59 win.

Led by the scoring of Marc Tappe with 18, Matt Krusemark with 15, Tony Brown with 13 and Keith Wenstrand with 12, the Trojans were able to keep Homer in check to start the second half and

come away with a win.

ACCORDING TO Wakefield Coach Paul Eaton, Wakefield opened the second half outscoring Homer 30-10 after being behind at halftime 34-30. In the third quarter, the Trojans distanced themselves from their hosts by scoring 23 points to Homer's eight.

"We had three starters with two fouls with five minutes left in the first half so we decided to take

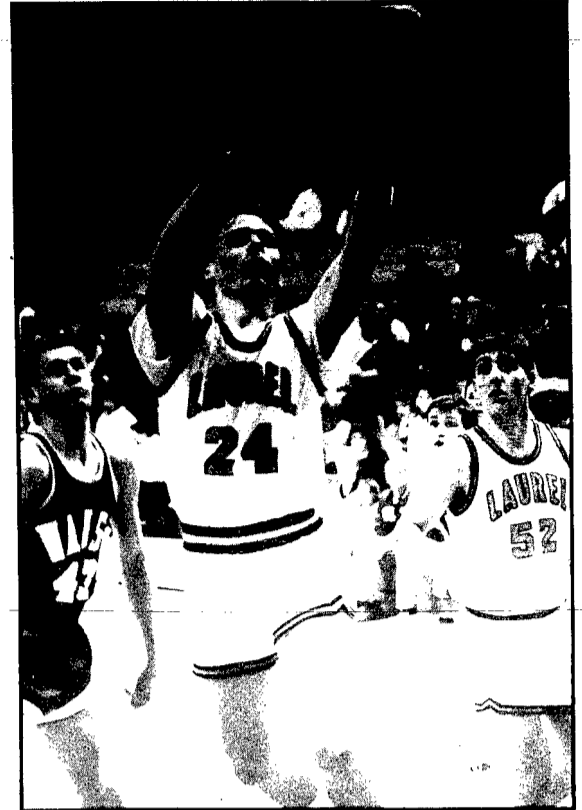
them out and not risk any more fouls," Eaton said. "We knew that if we could keep them out of foul trouble in the second half, we'd be OK and that's just what happened."

LEADING SCORER for Homer was Travis Bodlall with 26 points. Bodlall currently leads the conference in scoring.

Wakefield was strong off the

boards as well. Winstrand pulled down nine rebounds, Ben Dutton had seven and Brown had six. Brown also led the Trojans with eight steals. As a team, Wakefield outscored Homer 30-20.

With the win, the Trojans improve their season mark to 21-2. Their next game is Tuesday when they play Laurel in the first round of the sub-district tournament at Wayne State College.



Photography: Mark Critt

LAUREL'S TRAVIS MONSON drives the ball to the hoop early in the Bear's game against Wausa. Laurel lost the contest, however, 71-43.

Wayne consistent in topping Pierce

PIERCE - Toppling your arch rival is always one of the highlights of a season, just as Wayne found out Friday night. Bob Uhing's Wayne Blue Devils beat Pierce 75-61.

If there was anything to be told, it had to be Wayne's intensity. Uhing said the Blue Devils played consistently all night long and that was indicative in the scoring by quarters.

AFTER THE first quarter, Wayne led 22-15 and at the half, the Blue Devils extended their lead to 11 at

38-27. Again, after three, WHS was up 58-46.

"I was most pleased about the intensity of our play over four quarters," he said. "Playing like we did for four quarters really pleased me."

As a result of the team's consistent play, a number of players scored in double figures. Bobby Barnes and Regg Carnes led the team with 20 points apiece and Jeff Griesch popped in 11. Rounding out Wayne's scoring was Kyle Dahl with five, Brian Lentz with

four, Aaron Wilson with three and Martin Rump with two.

FOR PIERCE, scoring was led by Eric Wachholtz with 16 and Jeff Pospisyl with 12.

Also of statistical importance was the Blue Devils' ability to convert from the free throw line. Wayne knocked down 23-of-29 free throws to Pierce's 10-for-14 effort.

Rebounding in the game was led by Carnes with 10 and Griesch with five.

"The kids played well tonight," Uhing said. "Bobby (Barnes) and Regg (Carnes) played exceptionally well as did Brian Lentz and Aaron Wilson coming off the bench."

In the turnover category, Wayne lost the ball 12 times while Pierce lost it 14 times.

In the junior varsity matchup, Wayne was led to the win by John Murphy, who scored 16 points, in a 44-36 score.

The varsity win improves the Blue Devils' season mark to 9-9.

Wayne girls lose game in last six seconds

WAYNE - Things looked good for the Wayne High School girls basketball team but in the last minute of their game Thursday night against Schuyler, things just fell apart.

The Lady Blue Devils appeared to be cruising to their ninth win of the season as they had led all the way through the contest but with six seconds left in the game, Schuyler hit their lone three pointer of the evening to steal away the win, 50-47.

"We led the entire game until the final six seconds," said Blue Devil Coach Marlene Uhing. "When they hit the three pointer, they went ahead by one and we were forced to foul and that was it."

said the thing that hurt the Blue Devils late in the game was missed free throws and poor rebounding when Schuyler was on offense.

In the last minute of the game, Wayne missed four free throws.

Leading the all scorers in the game was Jennifer Hamer with 16 points. Liz Reeg poured in 14 points as Wayne's second leading scorer while Piskie Ensz poked in eight. Erin Pick had five and Danielle Nelson netted four.

but against Schuyler, they had only 12 to their opponents' seven.

"We played well," Uhing said. "We've had trouble with unforced turnovers all season. We also played well defensively. We controlled the game until the fourth quarter but their offensive rebounds killed us."

ANOTHER POSITIVE note was that Wayne held down Schuyler's big girls' scoring. Uhing said Schuyler had two girls standing over six feet tall and neither one of them scored in double figures.

From the stripe, the Blue Devils went 19-35 for 54 percent and Schuyler was 7-13 for 54 percent.

IN JUNIOR varsity action, Wayne lost the contest 29-25 to finish the season with a 10-5 record. The leading scorer for the JVs was Kim Kruse with six points.

Next action for the varsity squad is Tuesday at 6:15 p.m. when they will square off against second seed district opponent Columbus Lakeview.

Wausa starts too quickly for Laurel to catch up

LAUREL - After jumping to a 10 point lead just 3:50 into the game, the Wausa Vikings sailed past the Laurel Bears Friday night 71-43.

Wausa started its attack early in the contest jumping to a 14-4 lead just 4:10 into the first quarter but it was just a minute later that Laurel looked like it might get back into the contest. After the end of the first period, Laurel was down by just three at 17-14.

but extended its lead to 60-30. Despite the loss, however, Laurel had some high marks as the Bears were led in scoring by Andy Smith who dished in 18 points, two coming off three pointers. Smith also led the team in rebounding with seven.

OTHER SCORERS for Laurel included Kris Krie with nine, Dustin Roberts with seven and Brian Penne, Travis Monson, John Ebmeyer, Justin Swanson and Bruce Haich, each with two.

Wausa was led in scoring by Joe West with 18, Jody Jensen with 15 and Jon Baue with 15.

As a team, Laurel shot 6-for-12 from the stripe and Wausa hit 14-for-15 from the line.

Wildcats drop game to Briar Cliff

WAYNE - Despite being down by just one point at the half to Briar Cliff, the Wayne State Wildcat men's basketball team ended up on the short end Wednesday night 75-60.

Briar Cliff outscored the Wildcats 48-34 in the second half. The loss drops Wayne State's record to 7-18.

Leading scorer for Wayne State was Chad West who hooked up for 22 points. Casey Gates was the only other Wayne State player in double figures with 11 points.

OTHER WAYNE State scorers included Davy Summers with three points, Doug Kuszak with nine, Michael Parks with two and Don Smith with nine.

As a team, the Wildcats shot 41 percent for the game, hitting 33 percent in the first half and 50 percent in the second half. Briar Cliff hit 25 percent for the first half from the field, while marking a scorching 63 percent in the second half.

Leading scorers for the Chargers were Armado Martinez with 22 points, Shane Slaughter with 13 points, Leon Trimmingham with 12 points and Alex Funes with 11.

For the game, there were eight ties and seven lead changes.

WSC to host track event for all-comers

WAYNE - The Wayne State College indoor track and field All-Comers meet will be held Friday, Feb. 22 at 5:30 p.m. in the recreation center.

The event, sponsored by the Wayne State track team, features an unlimited amount of entries at \$3 per athlete. There will be four divisions: junior high (ages 14 and under); senior high (ages 15-18); open (ages 19-39) and masters (age 40 and above).

The WSC recreation center is located on the north edge of the Wayne State College campus, adjacent to Highway 15.

THE SURFACE for all events is smooth polyurethane with a six-lane, 160-meter track with 42 inch lanes. Spikes are prohibited, as well as wrapping tape around shoes. Tape will not be supplied at the meet and Wayne State College requests participants not to use tape on the surface of the recreation center.

The meet schedule is as follows (distances in meters): 55, 1,500, 55 hurdles, 400, 800, 3,000 1 lab (160 meters), 4X1 lap relay, 4X400 relay, shot put (women/men), High Jump (women/men) and long jump (men/women).

For additional information, contact the Wayne State College track and field coach John Johnson at 375-7526 or 375-3040.

Sports Briefs

Wayne topples South Sioux City

WAYNE - Led by the scoring of Tami Schluns, the Wayne freshman girls basketball team tumbled South Sioux City 41-32 Tuesday night.

Schluns led the team in scoring with 18 points. Angie Thompson and Sarah Hampton each scored eight apiece. Jenny Thomsen had four points and Audra Sievers scored three.

Thomsen and Thompson tied for the team lead in rebounds with 11 apiece and Sievers had seven.

Wayne girls seeded seventh

WAYNE-The Wayne girls basketball team is seeded seventh in the B-4 district tournament to be held at Northeast Community College in Norfolk beginning Monday.

The opening game on Monday will have top seeded Pierce squaring off against eighth seeded Logan View at 6:15 p.m. with fourth seeded Columbus Scotus taking on fifth seeded West Point at 8 p.m.

On Tuesday night the Blue Devils will take on second seeded Columbus Lakeview at 6:15 p.m. with third seeded Schuyler taking on sixth seeded Neligh-Oakdale at 8 p.m.

The semi-finals will be on Wednesday night at 6:15 and 8 p.m. with the finals slated for Thursday at 7:30 p.m.

Allen loses in sub-districts

ALLEN-The Allen girls basketball team was eliminated from sub-district play Monday night by Walthill, 52-48, thus ending the Eagles season at 6-11. Allen led Walthill 13-11 after one quarter of play and by four at the intermission, 29-25.

Walthill though, still trailed by three points after the third quarter but out scored the Eagles 16-9 in the final eight minutes with the aid of three Allen starters who had fouled out.

Denise Boyle led Allen with 21 points and 12 rebounds while Heather Sachau tossed in 13. Cindy Chase added eight points while Lisa Sullivan, Carla Stapleton and Sonya Plugger added two points each.

In Allen's final regular season game against Beemer, the Eagles soared to a 49-23 win. Allen led just 20-15 at the half but went on a 16-1 scoring run in the third quarter to ice the game for head coaches Lori Koester and Gary Erwin.

Cindy Chase led the way with 16 points while Heather Sachau poured in 13. Robin Schroeder scored eight and Denise Boyle added six. Sonya Plugger and Steph Martinson rounded out the attack with four and two points respectively.

"We've had a hard luck season," Koester said. "We had six losses by one or two points and we lost two games in overtime."

YOUR STATIONS FOR BASKET BALL TOURNAMENTS

RTCH 1590 AM 105 FM

BOWLING AT MELODEE LANES

RTCH 1590 AM 105 FM

State National Bank & Trust Co.

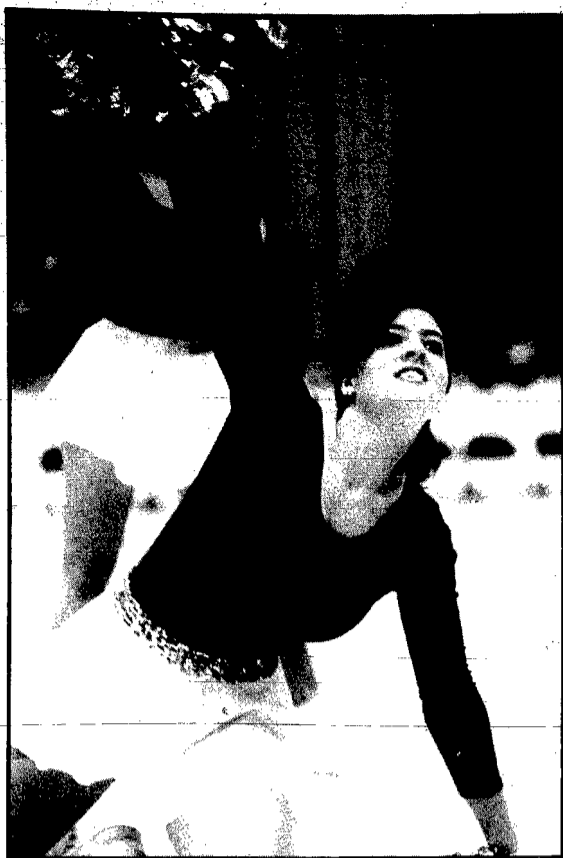
116 WEST 1ST. WAYNE 375-1130

Make us your prescription headquarters!

MEDICAP PHARMACY

202 Pearl St. Wayne, NE.

Senior Citizens Bowling On Tuesday, Feb. 12, 33 senior citizens bowled at Pender Lanes with the Dale Gutshall team defeating the Swede Hulley team with scores of 7320-6976. High series and games were bowled by Al Benson, 548-182; Sid Preston, 517-194; Jack Brownell, 514-203; Lavern Ostendorf, 511-188; Richard Carman, 507-201; Eldon Roberts, 496-187; Bill Slipp, 496-185; Lavern Harder, 486-182; Arland Aurich, 482-184; Warren Austin, 482-178; Myron Olson, 4788-174; Perry Johnson, 472-192; Duane Creamer, 467-172; Dale Gutshall, 4676-171; Don Lutt, 462-159; Winton Wallin, 458-160; Ar Burmond, 458-156. On Thursday, Feb. 14, 29 senior citizens bowled at Melodee Lanes with the Norman Anderson team defeating the Perry Johnson team with scores of 7247-7042. High series and games were bowled by Duane Creamer, 538-219; Al Benson, 534-221; Myron Olson, 534-186; Richard Carman, 530-191; Cliff Baker, 527-185; Eldon Roberts, 516-193; Warren Austin, 514-183; Bill Slipp, 510-196; Sid Preston, 511-194; Merlound Lessman, 509-200; Norman Anderson, 500-172; Winton Wallin, 499-179; Milton Matthew, 484-189; Leo Tietgen, 473-174; Lavern Ostendorf, 460-191; Arland Aurich, 458-173; Jack Brownell, 457-168.	Monday Night Ladies W L Wayne Herald 20.5 8.5 Midland Equipment 20 8 Producers Hybrid 19 9 Carkharts 18 10 Swans 17 11 Dave's Body Shop 16 12 First Bankcard Ctr. 12 16 Ray's Locker 12 16 Tom's Body Shop 11.5 16.5 Lut Trucking 11 17 Hank Custom Wk 10 18 Pizza Hut Incomplete High Scores: Rita McLean, 218; Sandra Gathje, 558; Swans, 880-2525. Kathy Hochstein, 213; Sandra Gathje, 208; ReNea Saunders, 530; Linda Gamble, 515; Carkharts, 869-2507; Midland Equipment, 863-2483.	Thursday Night Couples W L Slipp-Twite 16 12 Helms-Sturm 18 14 Spahr-Rahn 16 14 John-Maier-Sever 16.5 15.5 Austin-Brown 16 16 Fuehlth-U 16 16 Crist-Hardt-Weasel 16 16 Carm-Ostr-Schroo 14.5 17.5 Hansen-Metz 14 18 Blisten & Friends 11 17 High Scores: Anita Fuelberth, 195; Dave Heidt, 202; Spahr-Rahn, 662; Austin-Brown, 1874. Anita Fuelberth, 184-525; Connie Spahr, 182; Dean Metz, 5-8-10 split; Esther Hansen, 4-10 split.	City League W L Clarkson Service 16 4 Black Knight 15 5 Tom's Body Shop 14 6 Pac-N-Save 14 6 Pabat Blue Ribbon 10 10 Wayne Greenhouse 10 10 Melodee Lanes 9 11 K.P. Construction 9 11 L & B Farm 8 12 Wayne Vets Club 5 15 Tru Travel 5 15 Ellington Motors 5 15	Wednesday Night Owls W L Logan Valley 24 8 Ray's Locker 20 12 Electrolux Sales 19 13 TCP Construction 19 13 Comertd State Bank 18 14 4th Jug II 18 14 Windmill 15 17 Agi-King 14 18 Dokab 13 19 Melodee Lanes 9 19 Wacker Farm Str. 11 21 4th Jug I 9 23 High Scores: Doug Rose, 257; Kevin Peters, 862; Tom's Body Shop, 637-2734. Dave Jaeger, 222; Dan Jaeger, 205; Verneal Marott, 230; Danin Banner, 202; Larry Voss, 202; Kevin Peterson, 214; Mike Groez, 213-233-645; Doug Rose, 602; Don Leighton, 208; Vern Summerfield, 201; Mic Daehnke, 205; Roger Lueth, 210; Kevin Peterson, 214-222-246; Larry Eckenkamp, 201; Chuck Maier, 201.	Junior League W L Cougars 16 2 Ultra-Pink Bowlers 13 7 877 Team 10 12/9 Air Force 3 7 Strike Out 4 4 Nasty Boys 4 4 Gutter Dusters Incomplete Knock Outs Incomplete High Scores: Jennifer Hank, 172-469; Eric McLagan, 172; Tyler Endicott, 417; Cougars, 560-1615. Josh Starzl, 101; Kari Schindler, 122-302; Kelly Hammer, 123-332; Chris Johnson, 127-334; Troy Bruns, 106; Eric McLagan, 402; Stacy Varley, 130-328; Jennifer Hank, 151; Jon Gathje, 127; Nick Vanhorn, 168-415; Rick Endicott, 125-350; Matt Morrison, 124-340; Tyler Endicott, 166-417; Rick Endicott, 5-7 split.	Saturday Night Couples W L Ewin-Benson-Schultz 16 6 Shultheis-Baker 17 7 Lueth-Peters 15 9 VandeVelde 16 9 Weiland-Munter 13 11 Katho-Endicott 4 11 Hix-Frewet 13 11 Summerfield-Beza 12 12 Allermann-Wacker 11 13 Schulz-Blackburn 9 15 High Scores: Laurie Schaeffer, 190; Connie Endicott, 521; Brad Wieland, 198; Jim Shultheis, 151; Ewer-Benson, 707; Peter-Lueth, 1854. Deb Gustafson, 182; Connie Endicott, 182; Nori Blackburn, 188.
---	---	---	--	--	---	---



Photography: Barry Dahlkoetter

One more performance

WAYNE STATE COLLEGE Aristocat Anne Kovar performs during a recent halftime routine at a Wildcat basketball game. Kovar and the other Aristocats will be making their final appearance of the year when Wayne State College hosts Kearney State March 1 for their annual showdown.

School Lunches

ALLEN
(Week of Feb. 18-22)
Monday: School pizza, buttered carrots, half apple.
Tuesday: Spaghetti and meat sauce, carrot sticks, pears, bread sticks.
Wednesday: Nachos, peas, peach crisp.
Thursday: Steak nuggets, mashed potatoes and gravy, fruit cocktail, wheat roll and butter.
Friday: Chicken and rice soup, lettuce and dressing, half banana, peanut butter sandwich.
Milk served with each meal

LAUREL-CONCORD
(Week of Feb. 18-22)
Monday: Beans and smokies, macaroni and cheese, fruit mix, tea bun.
Tuesday: Meat loaf, baked potato with butter and sour cream,

diced pears, bread and butter.
Wednesday: Fiestados, scalloped corn, apple crisp.
Thursday: Beef pattie on bun, French fries, pickles and onions, pineapple, peanut cookie.
Friday: Tuna salad or cheese sandwich, yellow wax beans, Rice Krispie bar, peaches.
Salad bar available daily
Milk served with each meal

WAKEFIELD
(Week of Feb. 18-22)
Monday: Cheeseburger on bun, pickles, French fries, gelatin cake, cherries.
Tuesday: Hoagie sandwich, lettuce and cheese, corn, Rice Krispie bar, applesauce.
Wednesday: Polish sausage, corn bread and syrup, green beans, pears, cookie.

Thursday: Salisbury steak, mashed potatoes, fruited gelatin, roll and butter, poor man's cake.
Friday: Tuna and noodles, cinnamon roll, relishes, peaches, cheese wedge.
Milk served with each meal

Available daily: Chef's salad, roll or crackers, fruit or juice, and dessert.
Milk served with each meal

WAYNE-CARROLL
(Week of Feb. 18-22)
Monday: Chicken nuggets, barbecue sauce, whipped potatoes, dinner roll, applesauce, cookie.
Tuesday: Spoonburgers, pickle spear, corn, pears, cookie.
Wednesday: Taco or taco salad, green beans, pineapple, cookie.
Thursday: Hot dog with bun, tri taters, peaches, brownie.
Friday: Egg salad and/or peanut butter sandwich, tri taters, fresh vegetable sticks, cherry shortcake.

WINSIDE
(Week of Feb. 18-22)
Monday: Chicken pattie with lettuce and mayonnaise, curly fries, buttered corn.
Tuesday: Pizza, carrot sticks, peaches.
Wednesday: Hard shell tacos, lettuce and cheese, cake, fruit.
Thursday: Barbecued beef sandwiches with cheese, pickle spears, spud buds, bars.
Friday: Fish nuggets, tartar sauce, silver dollar fries, rice and raisins.
Salad bar available daily for students in grades 6-12
Milk served with each meal

Information released about alternate crops

AREA - Under the 0/92 option of the 1990 Farm Act, producers will be permitted to plant minor oil seed crops, such as sunflower, safflower, rape and canola, among others, on their conserving use acres. Although research into the production of minor oil crops has not been extensive in northeast Nebraska, some experts believe that sunflower rather than canola may be the better alternative crop choice for northeast Nebraska producers. However, risks and costs must be considered before producers devote any acreage to the production of either crops.

A relative small proportion of northeast Nebraska acreage has been devoted to sunflower production in recent years. Sunflowers are drought tolerant, making them attractive for dryland production. Dryland sunflower yields should range between 1,000 and 2,500 pounds per acre. If irrigation is available, sunflowers should respond similar to soybeans to application of water. Sunflowers are attacked by a number of insects and plant diseases. The head moth is often a serious pest, requiring aerial application of insecticides.

Canola is a much newer crop to northeast Nebraska than sunflowers. Winter and spring canola varieties are available at most seed companies. Spring canola is grown in Canada and the northern states of the country where winters may be too harsh for winter canola. Early summer temperatures in Nebraska are apt to be too stressful for a good canola yield. According to Russell Moomaw, Extension Crops and Weeds Specialist at the Northeast Research and Extension Center in Concord, spring canola yields at the Northeast Center have averaged only 250 to 600 pounds per acre. Currently, available winter canola varieties may winterkill in northeast Nebraska, depending upon the degree of low temperatures and snow cover. One producer harvested about 1,000 pounds of canola seed per acre from part of his field, but winterkill occurred on other parts. A winter canola variety planted in mid-August will likely have the greatest chance of success. More winter-hardy canola varieties may become available in the near future for northeast producers.

When considering a choice between sunflower and canola, producers must be aware of the cash costs per acre before investing in either choice. For example, if

yields of only 1,000 pounds per acre are achieved in canola, a producer would need about eight cents per pound to cover cash costs, which, according to Timothy Powell, Farm Management Specialist at the Northeast Research and Extension Center, average approximately \$75 per acre. Recent market prices for canola have averaged less than six cents per pound. At six cents per pound, yields would have to be just over 1,300 pounds per acre. These high yields would be difficult to achieve in the northeastern part of the state.

Higher yields are one advantage for choosing sunflower. The breakeven price for dryland sunflower is approximately seven cents per pound at yields of 1,500 pounds per acre (cash costs at \$98 per acre). Yield levels in dry conditions of northeast Nebraska will usually be about 1,000 to 2,000 pounds per acre. The current market price for sunflower has ranged around eight to nine cents per pound. At eight cents per pound, around 1,200 pounds per acre is needed to breakeven. Cash costs for irrigated sunflower are estimated at approximately \$139 per acre. Breakeven at eight cents per pound would be about 1,750 pounds per acre. Under irrigation, sunflower yields have been reported as high as 3,000 pounds per acre.

The biggest disadvantage to both sunflower and canola in northeast Nebraska is the non-availability of processing plants. High transportation costs need to be considered since currently there are no processing plants in Nebraska for minor oil producing plants. Converting soybean plants to also accommodate minor oil seed crops may become a possibility in the future, depending upon the size and growth of the market. Storage facilities are also scarce which may also contribute to hidden costs.

Producers interested in taking advantage of the farm program and growing either canola or sunflower must look at their cash costs of production and whether or not the expected return for either crop will be greater than the cash costs. If not, it may be better to dry a different crop which producers are already accustomed to growing or to grow no alternative crop at all.

Land link available

AREA - The Center for Rural Affairs in Walthill, has announced the start of Land Link a new program linking beginning farmers with landowners interested in helping new farmers get started in agriculture.

The program involves a comprehensive set of services, including a clearinghouse linking beginning farmers with landowners and a farm management service for landowners wanting to lease land to farmers (especially beginning farmers) who will practice sustainable farming methods.

Land Link will respond to the need of beginning farmers to find land and the desire of many retiring farmers to find a new farm family who will take care of their farm as they have. One-fifth of the farmland in Nebraska is farmed by someone over age 65 and almost one-half of all farm assets in the country are held by farmers aged 55 or over.

"We think an innovative new program like Land Link is just what is needed to get land into the hands of beginning farmers who will practice sustainable agriculture," said Allen Prosch of the

Center. "There is a tremendous amount of interest among young people to enter farming and we want to help facilitate the transfer of assets from retiring farmers to beginning farmers."

The Land Link Clearinghouse is a data base which will link beginning farmers and landowners willing to cooperate on a sustainable farming operation. To use the clearinghouse, a beginning farmer looking for land or a landowner wanting to lease or sell land to beginning farmers, should send their name, address, and phone number to Land Link, the Center for Rural Affairs at Box 405, Walthill, NE 68067. The person will then receive a questionnaire asking for information about the type and location of the farm they own or want to farm, and other information needed to make matches between landowners and beginning farmers. Being listed in the clearinghouse is free, but anyone wanting the clearinghouse listings of either beginning farmers or landowners who match their interest will be charged a small fee of \$5.

Lutt to get award

WAYNE - Jeff Lutt, Wayne, has been awarded the \$500 Art and Margaret Hughes Memorial Scholarship to attend Wayne State College. Lutt, a 1990 graduate of Wayne High School, is the son of

Denny and Jean Lutt of Wayne. He is a freshman majoring in business at Wayne State where he is also involved in football and baseball. At Wayne High School, he was involved in football, the W-club and the Spanish club.



Diane Nelson



Laura Bilstein

Northeast graduates 24 with nursing degrees

AREA - Graduate exercises for the 44th class of practical nurses at Northeast Community College was held Tuesday, Feb. 12.

Rev. John Hennessey, chaplain of Our Lady of Lourdes Hospital, delivered the invocation and benediction and Dr. Robert Cox, president of Northeast Community College, gave the welcome. The graduation address was given by Pat Meierhenry of Hoskins.

Among the 24 diplomas presented to practical nursing graduates were: Patricia Bethune, Carroll; Diane Nelson, Carroll; Sally Block, Hoskins; and Laura Bilstein, Wayne.

Chemical testing program offered by fertilizer dealers

AREA - March 4-7, the Nebraska Fertilizer and Ag-Chemical Institute in conjunction with Harris Laboratories, Lincoln, are offering blood testing for employees of fertilizer and chemical retail dealers across Nebraska, according to Bob Anderson, President of the 800-member organization.

The testing will be held at 21 locations across Nebraska during the four-day period and is specific testing of "cholinesterase levels" in the blood system.

According to Anderson, "Cholinesterase is the organic compound in the blood system that allows electrical charges to pass from one nerve ending to another. Inhalation, skin absorption, or ingesting of certain chemicals causes inhibition of the cholinesterase base levels in the blood.

"Testing individuals who are exposed to these chemicals both prior to and following the spring chemical season can determine the normal ranges of cholinesterase in plasma and red blood cells. Establishing the base levels and 'history' of those exposed to

organophosphorus and carbamate chemicals, can greatly assist in finding antidotes and remedies for any over-exposure during the season, and also may indicate the need for better protective clothing and equipment.

Testing will be conducted at Providence Medical Center in Wayne, among others.

The safety and wellness of the employees of the fertilizer and ag-chemical trade is the thrust behind the program, which is in its second year of existence. Testing for the "before season" baseline is being conducted during the week of March 4-7, and an early June date will be scheduled for the "after season" testing.

According to the official, "The program is a great preventative procedure for employee wellness, providing a safeguard and safety programs for the dealers and their employees in Nebraska."

Further details and for those wishing to sign up may do so through any member-retail fertilizer and ag-chemical dealership in Nebraska.

Culture

(continued from page 1)

concert. Rehearsing will be the Wayne State Concert Choir and John Price, music professor at Tuskegee University.

At 5:15 p.m. in Ley Theatre, Price will present a lecture/demonstration entitled "The Influence of Native African Musics on Modern American Music."

The festival concludes at 8 p.m. in Ley Theatre with a concert featuring Wayne State ensembles, Price and soprano Ann Dorr of Northwestern College.

Other organizations responsible for producing and funding the festival are the Nebraska Humanities Council, the Nebraska Arts Council, the NHC Humanities Resource Center, the Wayne State Divisions of Humanities and Fine Arts and the Wayne State Office of Student Services. Coordinators are Dr. Beverly Soll and Dr. Jo Taylor, division head of humanities at Wayne State.

For more information concerning the Celebration of African Americans, call (402) 375-7492.

Mash makes list

WAYNE - The names of Kearney State College students who have earned a place on the Dean's list for the fall semester were announced this week by Dr. Gene Koepke, dean at the University of Nebraska-Kearney.

Among those named to the list

is Christina Mash of Wayne. She is the daughter of Dr. and Mrs. Donald Mash of Wayne.

Students earning Dean's List honors must complete 12 or more hours of graded courses with a grade point average of 3.5 on a 4.0 scale.

S&L to be making changes in way it is doing business

WAYNE - W.M. Ferguson, president and chief executive officer of Columbus Federal Savings Bank, Columbus, announced that the bank has received approval from the Office of Thrift Supervision in Washington D.C. to convert from a federal mutual savings bank to a federal stock savings bank.

Under the conversion plan, the bank will offer and sell its common stock to a group of investors, the majority of whom will be directors and officers of the bank.

As a result of the conversion, which is expected to raise net proceeds of approximately \$1.3 million, the bank's capital position will be substantially strengthened.

The bank is expected to be in full capital compliance by June, 1992.

Ferguson said the additional capital raised by the sale of the common stock will provide the foundation for continued growth for the institution.

Columbus Federal has assets totaling \$95 million and has offices located in Omaha, Lincoln, Fremont, Seward, Wayne, Grand Island, York and Columbus and has approximately 80 employees. During the year 1990, the firm originated over \$90 million in home loans throughout the state, ranking it among the top five home lenders in Nebraska.

THE WAYNE HERALD
AND MARKETER
114 Main Street Wayne, NE 68787 375-2600
PUBLICATION NUMBER USPS 670-560

PRIZE WINNING NEWSPAPER
1990 Nebraska Press Ass.

National Newspaper Association
Sustaining Member 1990

Serving Northeast Nebraska's Greatest Farming Area

Established in 1875; a newspaper published semi-weekly, Monday and Thursday (except holidays). Entered in the post office and 2nd class postage paid at Wayne, Nebraska 68787. Also publisher of The Marketer, a total market coverage publication.

POSTMASTER: Send address change to The Wayne Herald, P.O. Box 70, Wayne, Nebraska, 68787

Official Newspaper of the City of Wayne, County of Wayne and State of Nebraska

SUBSCRIPTION RATES
In Wayne, Pierce, Cedar, Dixon, Thurston, Cuming, Stanton and Madison Counties; \$25.00 per year \$20.00 for six months. In-state: \$28.00 per year, \$22.50 for six months. Out-state: \$34.00 per year, \$27.50 for six months. Single copies 45 cents.

Parents, 'Did You Know?'

Teen Parties — Part III
ALCOHOL AND THE LAW
 It is of the utmost importance that parents and teenagers be aware of the following Nebraska State laws pertaining to the giving of, possession of and the use of alcohol by minors.

1. A parent or other adult who furnishes alcohol to a minor is subject to a fine of up to \$500 or three months in jail or both. (State Statute 53-180: NLCA).
2. A minor who has alcohol in his/her possession on any public street or in any public place is subject to a fine of up to \$500, three months in jail or both.
 - No minor may sell or dispense or have in his/her possession or physical control any alcoholic liquor in any tavern or any other place including public streets, alleys, roads, highways, upon property owned by the State of Nebraska or any subdivision thereof, or inside any vehicle while in or on any other place including but not limited to the public streets, alleys, roads, highways, or upon property owned by the State of Nebraska, or any subdivision thereof, except that a minor may possess or have physical control of alcoholic liquor in his/her permanent place of residence. (State Statute 53-180.02 NLCA)
3. Parents and teens should note that "KEGGERS," where minors are drinking are strictly forbidden by law. (State Statutes 53-180 and 53-180.02 NLCA)

4. It is unlawful for a person to operate a motor vehicle while under the influence of alcohol. (State Statute 39-669.07)

- It is unlawful for any person to operate or be in the actual control or any motor vehicle while under the influence of any alcohol.
- A first conviction for operating a motor vehicle while under the influence of alcohol is a mandatory 7-day imprisonment, \$200 fine and 6-month license suspension or if probation is given it shall include a 60-day license suspension.
- Implied consent: Any person who operates or has physical control of a motor vehicle upon a public highway is deemed to have given his/her consent to submit to a chemical analysis of his/her blood, urine or breath for determination of alcohol content. Upon refusal to submit to the chemical analysis, the person is subject to the same penalties as one who is convicted for operating while under the influence. A first conviction is a mandatory 7-day imprisonment, \$200 fine and 6-month license suspension or if probation is given it shall include a 60-day license suspension.
- Subsequent offenses result in greater penalties and fines, upon a second conviction for drunk driving the person may be ordered to never again drive any motor vehicle in the State of Nebraska for any purpose and may have his/her op-

erator's license permanently revoked. (State Statutes 39-669.07 and 39-669.08)

LIABILITY?
 Parents and teens should realize that in today's society, the lawsuit is becoming more common than ever. What can the parent and the teen expect if they provide alcohol to a minor, or a minor who is intoxicated, who become involved in a motor-vehicle accident resulting in death or serious injury? There is no set formula for what can happen, but we are providing you with some things that you should consider:

- Who can sue? Any person, injured in person, property, means of support or otherwise by an intoxicated person; the injured person(s) and his family.
- Who can be sued? The parent who is in charge of the residence at which a minor received alcohol or the parents of a teen who provides alcohol to a minor. What must the person suing show? Three things: (1) Unlawful sale or giveaway to a minor; (2) of an alcoholic beverage; (3) to a person who later causes injury to others.

The State of Nebraska has already made a civil decision for parental responsibility for negligent actions of children while driving an automobile.

- Where the head of the family purchases, owns, maintains, furnishes or provides a motor vehicle for general use, pleasure and con-

venience of the family, and a family member is using the car with the expressed or implied consent or permission of the owner, negligence of the family member driver is imputed to the head of the family under the Family Purpose Doctrine. *Marcus Vs. Everett*. 195 NEB. 518 (1976).

- What can the person suing get? Monetary recovery for actual damages suffered, medical bills and loss of support plus physical pain and mental distress. In certain cases, recovery for "exemplary" damages.

HOTELS/MOTELS?
 For the teenager or parent planning to rent a room at a motel or hotel for a teenage party, motel/hotel managers would like you to be aware of the following: If the staff of the motel or hotel becomes aware that a party is taking place in one of their rooms, and minors and alcohol are present, law enforcement officers will be called to stop the party and make any arrests that are necessary. The arrest can also include the person who rented the room if that person is an adult, and they can be charged with contributing to the delinquency of a minor. When alcohol and minors are present, violations of the law are occurring, and motels and hotels can be in violation of law if they do not stop the party once they are made aware of them.

News Briefs

Laurel man is 'Good Neighbor'

LAUREL - Larry Cross was named "Good Neighbor" of the year by the Laurel Chamber of Commerce during its annual meeting held Feb. 9 at the Wagon Wheel Steakhouse. He received a plaque. Services which distinguished Cross for the award included serving as a volunteer fireman, directing traffic for more than 10 hours because of an accident, and video taping the Presbyterian Church services and delivering the tapes to Laurel area shut-ins.

Named to Dean's List

LAUREL - Carolyn (Wentworth) Harder, a junior nursing major from Laurel, has been named to the Dean's List for the fall semester at Mount Marty College. Students named to the Dean's List must carry a minimum of 12 graded credit hours and maintain a grade point average of at least 3.5 on a 4.0 scale.

Heritage Museum adding space

PENDER - The Heritage Museum of Thurston County, located in Pender, is planning to expand its space with new floor and wall covering in the attic room and by building new steps leading to a large third-floor room. Money for the work comes from approximately \$2,400 raised during the Christmas Tour of Homes, from \$1,000 in private donations, and from a Volunteer Service Grant from Aid Association for Lutherans Branch 1456. Museum touring hours are 2 to 4 p.m. on Tuesdays, Thursdays and Saturdays.

USDA sets up CRP provisions

AREA - Secretary of Agriculture Clayton Yetter announced the 1991 Acreage Reduction Program signup will be March 4 through April 26, and the 10th Conservation Reserve Program signup will be March 4 through March 15.

"Under new CRP program provision, bids on eligible land will be accepted based on environmental benefits obtained per dollar of cost to USDA's Commodity Credit Corporation," Yetter said.

Yetter cautioned producers that they should not rely on bid amounts which have been accepted in previous years when making their bids. "In past signups, there was a high expectation that a producer could rely on no change occurring with respect to the bid amounts which would be accepted," he said. "Producers who wish to enroll in the CRP should be aware there is increased competition."

Land eligibility requirements will be expanded from past signups to include not only highly erodible land, but also other cropland acres that reduce the impairment of water quality or improve wellhead protection. "Wellheads are sources of water for municipalities," Yetter said. "We expect to accept bids for protection of these wellheads as well as areas designated by states as '319 areas', which have been determined to be a source of water quality problems."

To increase water quality benefits under CRP, producers offering areas such as filterstrips, sod waterways, shelterbelts and contour grass strips will receive additional consideration during the bid evaluation process.

Yetter said bids for enrolling wetlands will not be accepted dur-

ing this signup. "The Food, Agriculture, Conservation and Trade Act of 1990 establishes a Wetland Reserve Program and we will announce details of this program in the near future," he said.

CRP bids will be accepted only for contracts beginning in 1991 and bid acceptance determinations will be made after a nationwide review and evaluation. Selection will be based on the environmental benefits received from placing the land in the CRP when compared to dollars of cost.

Yetter said producers will be permitted to enter the same acreage simultaneously into the annual commodity programs and the CRP, and to withdraw from the commodity programs, without penalty, if their CRP is accepted.

USDA needs 30 days to evaluate and accept a bid but acceptance is not binding on either the producer or USDA until the contract is signed, he said.

Fifty percent cost-share assistance will continue to be available to establish needed permanent vegetative cover, including trees, on the accepted acres. Annual rental payments for 10 years also will be paid to CRP participants, based upon their bid, except in some limited cases, such as hardwood tree planting, where a longer period may apply.

Further details will be made available to producers in the near future through their county Agricultural Stabilization and Conservation Service offices.

ARP program provisions were announced Dec. 31, 1990.

For more information about this or any other government program, contact the Wayne County ASC office.

Conway among senators on list

Senator Dennis Baack, along with Senators Stan Schellpeper, Arlene Nelson, David Bernard-Stevens, Joyce Hillman, Gerald Conway, M.L. Dierks, Bob Wickersham, Elroy Hefner and Richard Peterson, has announced that the hearing for LB 132, the Nebraska Education Centers Act, will be held Monday, Feb. 25, before the Legislature's Education Committee, in Room 1507 of the State Capitol. The hearing will be telecast, via satellite, from 2:30 to 4:30 p.m., to four remote sites. The sites include Scottsbluff, Grand Island, Norfolk and North Platte.

The purpose of LB 132 is to provide postsecondary educational programs and services to citizens unable to pursue their educational objectives under existing circumstances. The centers will coordinate the efforts of existing institutions, such as the University of Nebraska,

the state colleges and the community colleges, and will be oriented primarily toward the part-time and placebound student.

"When considering the interest in this issue from the people of western, central and northern Nebraska, I felt that it was of utmost importance that coverage was provided," Baack said. It will give the citizens living some distance from Lincoln the opportunity to view the hearing first-hand and to provide testimony to the committee from a remote location.

The hearing at Norfolk will be held at Northeast Community College, Maclay Building, Room 100A, 801 E. Benjamin Avenue. Site coordinator is Joe Ferguson, 644-0587.

For more information on LB 132, please contact Senator Dennis Baack at 471-2616.

4-H News

HELPING HANDS
 The Helping Hands 4-H Club met Feb. 10 in the Marilyn Morse home. Nine members, three leaders and three mothers answered roll call with their favorite song.

Ryan Brogren called the meeting to order. It was announced that a movie party is planned in April with Chad, Beth, Mary and Nick serving on the committee. Letters were written to Winside

servicemen serving in Operation Desert Storm, including Doug Mundil, Paul Walde, Lee Meyer and Jay Koch.

Chad Evans presented a demonstration on how to give a speech.

The Morse family hosted the meeting and Wendy Morse was in charge of recreation.

The next meeting will be March 10 at 7 p.m. in the DuBois home.

Connie Van Houten, news reporter.



On top of the world

SEVERAL CHILDREN FROM throughout the community recently had the opportunity to perform with the Wayne State College Cheerleaders and Yell Squad at a Wildcat basketball game. Here, Cheerleader Beth Henshaw gives Molly Muir a boost. Muir is the daughter of Steve and Trudy Muir of Wayne.

Shows to continue until March

WAYNE - Planetarium showings of "The Power" are continuing at Wayne State College on Sundays at 3:30 p.m. through March 17. The shows are free and open to the public.

The Fred G. Dale Planetarium is located at the south entrance of the Carhart Science Building on campus.

This program explores the beauty of the many galaxies that makes up the universe. It also features a conversation between Jack Horkheimer of PBS's "Star Hustler" and an 11-year-old girl. Her questions and conclusions and his inimitable way of explaining things make learning about nature's "largest building blocks" an enjoy-

able experience, according to Dr. Carl Rump, director of the planetarium.

In addition to the Sunday showings, special presentations for school groups and other organizations can be arranged by contact Dr. Rump at (402) 375-7343.

SPECIAL OPPORTUNITY TO ENROLL

Blue Cross and Blue Shield of Nebraska Representative Available for Limited Time to Help You Enroll.

Blue Cross and Blue Shield of Nebraska Depositor Health Care coverage is now available through your account at your bank or savings and loan.

With our CustomFlex Major Medical coverage, you have a choice of calendar year deductibles. It provides you and your family with benefits up to \$1 million, covering most types of care, in or out of the hospital.

For those 65 and older, there are three Medicare Supplemental plans: Medicare Gold, Medicare Silver, and Medicare Bronze. All plans include benefits for vision and hearing care. Each plan supplements Medicare payments. You choose the plan that suits your needs.

Don't miss this excellent opportunity to review your options with an agent from Blue Cross and Blue Shield of Nebraska: the company that provides health care coverage to more Nebraskans than any other insurer.*

* According to statistics available from Blue Cross and Blue Shield of Nebraska.

Other plans available to you through Corporate Diversified Services, Inc.
 Universal Life Insurance • Disability Income Protection • Pre-Paid Legal Coverage Long Term Care Plan

Enrollment Date
February 21, 1991

Please Call
Winside State Bank
 Winside, Nebraska
 9:00 a.m. to 12:00 noon

Farmers State Bank
 Carrol, Nebraska
 1:00 p.m. to 3:00 p.m.

For an appointment with the Blue Cross and Blue Shield of Nebraska representative
Ted Sass

The 5th Annual KTCH Auction Party will be held Sat., Feb. 23, 1991

Here's how you participate:

AS A MERCHANT: *Identify a piece of merchandise you would want to trade for advertising (gift certificates also work). *KTCH will trade you an amount of advertising equal to the retail value of the item. *You are guaranteed the specific amount of commercials whether or not the item sells, or what it sells for.

AS A BIDDER: *You don't have to leave your home office or home to take part in this auction, just call KTCH radio. *If you are the winning bidder, you come to KTCH, pay for the item, and pick it up immediately.

FOR MORE INFORMATION CONTACT:

1590 AM
105 FM

Blue Cross
Blue Shield
of Nebraska

Registered Marks Blue Cross and Blue Shield Association.

CORPORATE DIVERSIFIED SERVICES, INC.

Carroll News

Joni Tietz
555-4805

LADIES AID AND LWML

Lutheran Ladies Aid and LWML met Wednesday with eight members present. Cindy Hurlbert was the devotional leader and hostess. The group sang "When I Survey the Wondrous Cross," accompanied by Edith Cook. The devotion was taken out of the Lenten booklet, entitled "By His Stripes We Are Healed." Cindy concluded the lesson with a Lenten prayer.

Nancy Junck, president, called the meeting to order. The group received thank yous from the Goodwill for a Christmas monetary donation and from the Lutheran Home for a memorial that was established in the name of Anna Hansen. The president also reported on the executive board meeting which was held at Immanuel Lutheran Church in Laurel. The spring workshop will be held April 16 at St. John's Lutheran Church in Newcastle.

A discussion was held on sponsoring a bake sale on March 10 in conjunction with the pancake and omelette feed sponsored by the Community Club.

Viola Junck and Ivy Junck visited Elna Peterson at the Wayne Care Centre. Ann Hofeldt will be the visiting lady-in-February.

A discussion was also held on the paper drive. The group decided that only newspapers will be accepted. Items not to be brought include catalogs, phone books, magazines or slick paper items. Items should be placed in grocery bags or tied securely in small bundles and they may be left at the Carl Peterson home.

Cindy Hurlbert, Christian growth leader, concluded the meeting with a reading entitled "A Meditation of a Retired Person."

Ivy Junck will be hostess and devotional leader on Wednesday, March 13.

SENIOR CITIZENS

Senior Citizens met last Monday at the fire hall with 12 present. Mrs. Dora Stoltz hostess. Prize winners at cards were Mrs. Vernie Schnoor, Mrs. Paula Paustian and Mrs. Perry Johnson.

A thank you card was signed by Mr. and Mrs. Lynn Roberts for their treats last week.

The group will meet again today (Monday) with Mrs. Alice Wagner serving.

FIREMEN'S MEETING

Carroll Volunteer Fire Department met Wednesday at the fire hall. Thirteen firemen were present.

Final preparations for the annual stag were made. The fire department purchased a VCR for watching educational materials. A discussion was held concerning the recent CPR class attended by six firemen.

The next meeting will be held Tuesday, March 12.

PAPER DRIVE

A paper drive is being held by the Lutheran Ladies Aid and LWML. Only newspapers will be accepted. Items not to be brought include catalogs, phone books, magazines or slick paper items. Items should be placed in grocery bags or tied securely in small bundles. They may be held at the Carl Peterson home.

SOCIAL CALENDAR

Monday, Feb. 18: Senior Citizens, Mrs. Alice Wagner hostess.
Tuesday, Feb. 19: Hillcrest, Mrs. Anna Johnson.
Wednesday, Feb. 20: Happy Workers, Mrs. Pauline Frink; Presbyterian Women, Mrs. Etta Fisher hostess, Mrs. Milton Owens lesson leader.
Saturday, Feb. 23: Library open, 1-3 p.m.



WAYNE STATE COLLEGE seniors Jolene Nilchel and Will Rennick will present their senior art exhibit Feb. 25 through March 8 in the college's fine arts building. The public is invited to attend an opening reception Feb. 25 at 4:30 p.m.

Public invited to attend opening of student art show

WAYNE - The public is invited to attend an opening reception for Wayne State College senior art students Jolene Nilchel and Will Rennick on Monday, Feb. 25. The reception will begin at 4:30 p.m. in the Nordstrand Visual Arts Gallery, located on the upper level of the Val Peterson Fine Arts Building on campus. Reception hours are 9 a.m. to 5 p.m. Monday through Friday, and the mixed-media exhibit will be on display through March 8.

Nilchel, a graphic design major from Onawa, Iowa, is a 1985 graduate of West Monona High School. She is the daughter of Gary and Sharon Nilchel, and also does advertising layout for the college newspaper, the Wayne Stater.

Rennick, who is from Pilger, is also a graphic design major. He is the son of Marian Rennick, and is a 1963 graduate of Pilger High School. Rennick is also a member of the Northeast Nebraska Art Association in Norfolk.

Both Nilchel and Rennick will graduate in May.

Obituaries

Margaret Dougherty

Margaret Dougherty, 71, of Omaha died Wednesday, Feb. 13, 1991 at Omaha. Services were held Saturday, Feb. 16 at St. Mary's Catholic Church in Wayne. The Rev. D. J. O'Connell officiated. Margaret J. Dougherty was the daughter of James and Elizabeth Jennett Finn, was born in Wayne County. Following her marriage, she lived in the Wayne area. She moved to Omaha in the late 1940s. She worked as a nurse and a survivor of a breast cancer operation. She was preceded in death by her parents, husband, son Alvin, seven brothers and two sisters. Burial was in the Greene and Cemetery in Wayne with McBride-Wiltse Mortuary of Omaha in charge of arrangements.

Winside News

Dianne Jaeger
286-4504

SENIOR CITIZENS
Twenty-five members and two guests met at the American Legion. Free blood pressure checks were taken and Valentine's cards were finished. Entertainment hostesses were Elsa Burris and Leora Inel. The next meeting will be Monday (Monday) at 2 p.m. at the Community Club. All area seniors are invited to attend.
TOWN AND COUNTRY
Carol Jorgensen will host Tuesday Town and Country Club with nine members and a guest, Dianne Jaeger. Pillsbury and prizes going to Carol Jorgensen.

Lorraine Prince, Audrey Quinn and Dianne Jaeger. The next meeting will be Tuesday, March 12 with Audrey Quinn.

WEBELOS

Three Webelo Cub Scouts and one Bob Cat met Tuesday with leader Joni Jaeger at the fire hall. They worked on their Webelo badges, made decorations for the Blue and Gold and discussed their puppet play. Doug Auliner and Jeremy Jaeger served treats. The next meeting will be tomorrow (Tuesday) and Zek's Donuts will bring treats.

BRIDGE CLUB

The Don Wackes hosted the

Laurel News

Renee Saunders
256-9318

PRESBYTERIAN WOMEN
The Laurel Presbyterian Woman's Club met Feb. 7. There were 25 members present and two guests: Muriel Johnson called the meeting to order and Ruth Hawley gave opening devotions. A Presbyterian Woman's coffee hour is set for March 10.

made and Carol Swanson gave closing devotion.

Hostesses for February were Bernice Schultz, Joann Collings, Leona Bass and Mamie Larson.

YOUNG EDUCATORS

Lisa Anderson, formerly of Laurel, was chosen as one of three Outstanding Young Educators of Nebraska by the Jaycees at the state convention in Scottsbluff Feb. 8-10. The award was presented Saturday evening at the banquet.

Hoskins News

Mrs. Hilda Thomas
565-4569

20TH CENTURY CLUB
The 20th Century Club met at the home of Mrs. Alvin Wagner on Tuesday for their annual ethnic dinner. A Polish meal was served. Mrs. Jim Webster, president, conducted the meeting.
Roll call was a homemade valentine exchange.
Mrs. Don Johnson read the report of the previous meeting and gave the treasurer's report. Tentative plans were discussed for a tour in April.

Mrs. Raymond Jochens will be hostess for the next meeting on March 12.

EMT MEETING

The regular EMT meeting was held at the Hoskins fire hall Tuesday evening. Colby Gillespie was elected squad captain of the Hoskins-Woodland Park Rescue Unit; Natalie Shoemaker, assistant captain; Mary Scherer, secretary; and Jean Fulton, treasurer.

The next meeting will be on March 12 at the Hoskins fire hall.

Feb. Tuesday Night Bridge Club. Prizes were won by Bev Voss, Dorothy Jacobsen and Art Rabe. The next meeting will be Tuesday, Feb. 26 at the Warren Jacobsens.

PITCH CLUB

Lena Miller hosted the Feb. 10 Sunday Night Pitch Club with prizes going to Ann Behmer and Don Leighton. The next meeting will be Sunday, March 10 with Dolly Warnemunde.

TOPS

Members of TOPS 589 met Wednesday for weigh-in with Marian Iversen. Anyone wanting more information of this weight loss support group can call 286-4425. The next meeting will be Wednesday, Feb. 20 at 7 p.m.

BOOK CLUB

The Laurel Book Club will meet today (Monday) at 8 p.m. in the home of Ardis Cunningham. Joyce Daberkow will be the reviewer.

BOOK CLUB

The three equal award winners were chosen from 19 finalists from resumes, letters of recommendation and personal interviews. Mrs. Ardith Anderson of Laurel accompanied her daughter to the convention.

Applications being taken for Tour de Nebraska IV

AREA - Applications are now being accepted for Tour de Nebraska IV bicycle tour, which will cover about 360 miles in northeast Nebraska, June 19-23.

The circle tour, which begins and ends in Lincoln, will stay overnight at Prague, Pender, Albion and David City. The tour is organized by Rich and Susan Rodenburg of Lincoln.

Tour de Nebraska is limited to 100 riders. It is a completely supported tour, which means maps,

SCHOOL CALENDAR

Monday, Feb. 18: Kindergarten, A-L; Winside Scholarship Foundation members meeting, Winside Stop Inn, 7:30 p.m.
Tuesday, Feb. 19: Kindergarten, M-Z; boys sub-district basketball tourney at Randolph.
Wednesday, Feb. 20: Kindergarten, A-L.
Thursday, Feb. 21: Kindergarten, M-Z; boys sub-district basketball tourney at Randolph.
Friday, Feb. 22: Kindergarten, A-L; Student Council dance, 9 p.m.-midnight.
Saturday, Feb. 23: Conference speech contest at Wynot.

COMMUNITY COFFEE

The Hillcrest Care Center will host a community coffee on Friday, Feb. 22 from 9:30 to 11 a.m.

HAPPENINGS AT HILLCREST

Monday, Feb. 18: Bingo, 2:15 p.m.
Tuesday, Feb. 19: Hair day, 9 a.m.; Harry Wallace, 10:30 a.m.; St. Paul's Lutheran Church, 2 p.m.
Wednesday, Feb. 20: Sing-along, 9:30 a.m.; cards, 2 p.m.

Legal Notices

Every government official or board that handles public moneys, should publish at regular intervals an accounting of it showing where and how each dollar is spent. We hold this to be a fundamental principle to democratic government.

MINUTES WAYNE BOARD OF EDUCATION

February 12, 1991
The regular monthly meeting of the board of education was held in room 209 at the high school on Tuesday, February 12, 1991 at 7:30 p.m. Notice of the meeting and place of agenda formation published in The Wayne Herald on February 7, 1991.

The following members were present: Will Davis, Sidney Hillier, Kenneth Liska, Cap Peterson and Nell Sandahl. Kenneth Dahl was absent.

Board Action:

1. Approved minutes and bills.
2. Agreed to extend the early leave policy for one year.
3. Approved a school calendar for the 1991-92 school year.
4. Approved a freeholders petition from Dale and Laura Hochstein.

5. Denied a request for a student from Brazil to attend Wayne Public Schools tuition free the first semester of 1991-92.
AT&T, telephone, 62.06; Zach Propane, utility - Carroll, 874.28; A B Dick Products Co., maintenance & supplies, 3,617.68; American Council on Education, GED testing, 156.00; AT & T Information System, telephone, 415.10; AT and T, telephone, 39.25; Belmann Electric, electrical repair, 160.49; Big Bear Equipment Inc., repair grounds equipment, 252.28; Black Knight, gift certificate, 10.00; Boys Town Nat'l Institute, SPED, 262.50; Brad Weber, instructional travel, 74.39; Brower School Bus Parts, bus parts, 5.12; Business Management Serv., data processing, 284.90; Carhart Lumber Co., building maintenance, 176.85; Carr Auto & Ag Supply, bus battery, 67.85; Carter Peterson, NARS, 86.40; Chesapeake IRA conference, 80.20; Chromark Design A Sign, teaching supplies, 75.12; Cindy Meyer, SPED mileage, 186.90; Citicorp North America, telephone, 248.70; City of Wayne, utilities, 3,526.18; Crescent Electric Supply, building maintenance, 43.37; CTB, guidance, 1,916.22; Dairy Council of Central State, teaching supplies, 77.00; Dale Seymour Publications, guidance, 29.10; Dalton Band Instr. Repair, instrument repair, 224.10; David Lutt, Chapter 1, SPED, admin. expense, 235.24; Diane Cremer, car expense, 20.00; Diars Supply, softener salt, ind. exp., 142.05; Dietzo Music House, repair, 7.20; Don Daniels, data processing meeting, 5.20; Dr. Tom Contine - Kearney St.9, SPED conference, 90.00; Eastern NE Telephone Co., telephone, 38.22; Ev-Clearvue, audio-visual, 26.00; Ellingson Motors, bus repair, 162.26; ESU, 1-a, repair, in-service, equip., 88.65; Evan Bennett, public relations, 38.91; F R Haun, admin. expense, 197.23; Family Therapy Inst. Wash. D.C., registration & guidance, 160.00; Franklin Watts, Inc., library books, 163.38; Fredrickson Oil Co., gasoline, 2,135.88; G E C Manufacturing Co., athletic equip. & repair & grounds equip. repair, 90.40; Garrett Educational Corp., library books, 177.01; Harding Glass Industries, bus repair, 24.00; Heikes Automotive Service, bus inspection & repair, 322.08; Highsmith Co. Inc., library supplies, 45.35; Hogans Sporting Goods Inc., PE equip., 93.49; Holiday Inn of Kearney, Chapter 1, 50.00; Jays Music, band music, 115.25; Joe Voda's Drum City, band equipment, 204.50; Jostens, Inc., diploma covers & inserts, 407.61; Judy Olson, teaching supplies, 15.85; Kathy Rasmussen, in-service, 50.16; Koplin Auto Supply, bus, buildings & grounds exp., 195.02; Laurel Educational Resources, SPED, 294.98; Luaders G-Men, February disposal, 229.17; Macmillan School Pub. Co., textbooks, 96.60; Malecki Music Inc., choir music, 31.05; Master Lock Co., building maintenance, 18.77; Midwest Business Products, office supplies, 116.94; Midwest Plumbing & Heating, Carroll boiler repair, 543.06; Midwest Typewriter Co., typewriter repair, 55.50; Morris Machine-Weld Shop, repair grounds equip., 409.80; Nadine Lubberstedt, in-service, 16.73; Nannette Schulz, SPED in-service, 5.44; NE Library Comm-Act. Dept., audio-visual, 16.45; Nebraska Dept. of Educ., library expense, 2.50; Northeast Nbr. Insurance, increased liability insurance, 1,029.00; Northern School Supply Co., chairs and supplies, 981.18; Office Connection, computer, supplies & repair, 1,543.98; Office Systems Co., repair & supplies, 191.41; Olds, Ernz & Pieper, dues - NCSA, 110.00; Olson's, extermination, 80.00; Orton Dyslexia Society, prin. dues, 55.00; Pac 'N Save, home ec. supplies, 94.73; Pam Dickinson, teaching supplies, 9.90; Peace Education Foundation, guidance, 151.85; Peoples Natural Gas Co., utility, 4,844.48; Phi Delta Kappa, prin. dues, 80.00; Phillips Petroleum Co., gasoline, 25.06; Quality Foods, teaching supplies, 28.89; Questions Unlimited, guidance, 42.00; Quill Corp., teaching supplies, 163.90; Radio Shack, Chapter 11 and computer equip., 2,110.35; Richard Mettler, in-service, 73.23; Rieken Upholstery, repair bus seat cover, 12.00; Ron's Radio, building maintenance, 27.56; S D 17 Activity Fund, transfer drug fee grant, speech exp, NSBA, labor conf., 2,802.17; S D 17 Lunch Fund, federal-state reimbursement, 5,323.40; San Francisco Hilton, NSBA room deposit, 100.00; School Specialty Supply, equipment & supplies, 88.01; Scotts Foreman and Co., teaching supplies, 122.57; Shelly Whinger, in-service, 5.44; Southwestern Books, library books, 66.37; State of Nebraska, registration-fuel oil tax, 532.50; Taylor Music, repair, 51.00; Teacher's Discovery, teaching supplies, 18.25; U. S. West Communications, telephone, 526.29; Valcom Business Center, Chapter 11, 1,688.55; Viking Office Products, teaching supplies, 65.71; Wayne Auto Parts, bus parts, 15.88; Wayne Co. Public Power Dist., utility - Carroll, 65.50; Wayne Family Practice Gp, physicals, 118.00; Wayne Herald, proceedings & passes, 90.64; Wayne Sporting Goods, PE equip., 10.50; Wayne State Honor Band Festival, entry fee, 51.00; Wayne True Value, building maintenance, 21.94; Western Paper and Supply, kleenex & styro cups, 153.60; Zach Oil Co., bus tires & repair, 155.97; AT & T, telephone, 76.31; Big Bear Equipment, Inc., upkeep of grounds, 374.40; Dept. of Labor-Safety Div., boiler inspection, 10.00; Garrett Educational Corp., library books, 110.92; Huntington Laboratories, custodial supplies, 845.33; Jay's Music, band & choir music, 117.71; Jiffy Janitorial Supply, custodial supplies, 82.36; Norfolk Office Equipment, office supplies, 36.00; Office Connection, supplies, 43.13; S. D. 17 Activity Fund, NAG conference, 65.00; Sidney Hillier, NARS, 103.37; U. S. West Direct, phone books, 39.70; W. W. Grainger, Inc., casters, 39.60; Tom's Music House, supplies, 76.37; E. S. U. #8, asbestos workshop, 134.00; G. E. C. Manufacturing, podium cover, 17.50; Pamida, Inc., teaching supplies, 4.35.

NOTICE OF INFORMAL PROBATE AND NOTICE TO CREDITORS

ESTATE OF KATHRYNE A. STODDART, Deceased.
Notice is hereby given that on January 31, 1991, in the County Court of Wayne County, Nebraska, the Registrar issued a written statement of Informal Probate of the Will of said Deceased and that Citizens State Bank & Trust Co., 610 Oregon, Hiawatha, Kansas 66434 has been appointed Personal Representative of this Estate. Creditors of this estate must file their claims with this Court on or before April 4, 1991, or be forever barred.
(s) Pearla A. Benjamin
Clerk of the County Court
Thomas E. Brogan
Brogan & Stafford, P.C.
(Publ. Feb. 4, 11, 18)
2 clips

ORDINANCE NO. 91-04

AN ORDINANCE PERTAINING TO THE MUNICIPAL WATER DEPARTMENT; TO CHANGE PROVISIONS RELATING TO THE WATER COMMISSIONER, THE WATER-SEWER FUND, METER READING, TRAILER COURT TARIFFS, SEWER; AND TO REPEAL THE ORIGINAL SECTIONS.
BE IT ORDAINED by the Mayor and Council of the City of Wayne, Nebraska,
Section 1. Section 3-101 of the Wayne Municipal Code is amended to read as follows:
"MUNICIPAL WATER DEPARTMENT; OPERATION AND FUNDING. The Municipality owns and operates the Municipal Water Department through the City Administrator. When performing duties for the Water Department, the City Administrator shall be referred to as the Water Commissioner. The Governing Body, for the purpose of defraying the cost of the care, management, and maintenance of the Municipal Water Department may each year levy a tax not exceeding the maximum limit permitted by State law, on the actual valuation of all real estate and personal property within the corporate limits that is subject to taxation. The revenue from the said tax shall be known as the Water Fund and shall remain in the custody of the Municipal Treasurer. The Water Commissioner shall have the direct management and control of the Municipal Water Department and shall faithfully carry out the duties of his office. The Water Commissioner shall have the authority to adopt rules and regulations for the sanitary and efficient management of the Water Department subject to the supervision and review of the Governing Body. The Governing Body shall set the rates to be charged for services rendered by resolution and shall file a copy of the rates in the office of the City Clerk for public inspection at any reasonable time."
Section 2. Section 3-108.01 of the Wayne Municipal Code is amended to read as follows:
"MUNICIPAL WATER DEPARTMENT; RESIDENTIAL AND COMMERCIAL RATES.
A. Net Monthly Rate (Residential Rate):
Monthly Consumption Charge Rates in Gallons: Per 1,000 Gallons:
0 to 2,500 \$32.00
2,501 to 8,000 \$15.50
8,001 to 14,000 \$14.60
14,001 and upward \$13.50
Monthly minimum charge \$8.00
B. Gross Monthly Rate (Residential Rate):
Monthly Consumption Charge Rates in Gallons: Per 1,000 Gallons:
0 to 2,500 \$32.50
2,501 to 8,000 \$17.10
8,001 to 14,000 \$16.10
14,001 and upward \$14.90
Monthly minimum charge \$8.80
C. Net monthly rate (Commercial Rate):
Monthly Consumption Charge Rates in Gallons: Per 1,000 Gallons:
0 to 2,500 \$40.00
2,501 to 8,000 \$15.50
8,001 to 14,000 \$14.60
14,000 and upward \$13.50
Monthly minimum charge \$10.00
D. Gross monthly rate (Commercial Rate):
Monthly Consumption Charge Rates in Gallons: Per 1,000 Gallons:
0 to 2,500 \$41.00
2,501 to 8,000 \$17.10
8,001 to 14,000 \$16.10
14,001 and upward \$14.90
Monthly minimum charge \$11.00
E. Minimum Monthly Bill. The minimum monthly charge.

SECTION 3. Section 3-110 of the Wayne Municipal Code is amended to read as follows:

"MUNICIPAL WATER DEPARTMENT; SPECIAL WATER USE. The term 'Special Water Use' shall mean any non-polluting, i.e. not in violation of governmental laws or regulations, non-domestic use of water by a customer. Special water uses shall include, but not be limited to, the following:
A. Irrigating lawns or gardens;
B. Washing personal vehicles;
C. Cooling water for air conditioners;
D. General outdoor cleanup.
E. Watering livestock."
Section 4. Section 3-110 of the Wayne Municipal Code is amended to read as follows:
"MUNICIPAL WATER DEPARTMENT; METER READING AND BILLING. Meters shall be so set that the dial or face of the meter shall be easily accessible to the Water Commissioner or his agent when reading or testing the same, and shall be located in meter pits or basement. All meters shall be sealed, and no person shall deface, injure, or break any of said seals unless authorized to do so by the Water Commissioner. Account between the consumer and the City shall be kept by the Water Commissioner under such bookkeeping system as shall be approved by the Mayor and Council. A consumer's ledger shall be kept current with a separate account for each consumer on a separate sheet in said ledger. All of said meters shall be read not less than quarterly by the Water Commissioner or his agent between the fifteenth (15th) day and the twenty-eighth (28th) day of the month. Water service meter reading shall be computed and bills made up for their collections by the Water Commissioner on or about the first (1st) day of each month."
Section 5. Section 3-122 of the Wayne Municipal Code shall be amended to read as follows:
"MUNICIPAL WATER DEPARTMENT; TRAILER COURTS. All trailer courts licensed in the City of Wayne, Nebraska, shall be metered through one (1) master meter and the use tariff of rates shall be applied.
Section 6. Original sections 3-101, 3-108.01, 3-108.02, 3-110, and 3-122 are repealed.
Section 7. This ordinance shall take effect and be in full force from and after its passage, approval, publication or posting as required by law. Publication in pamphlet form is authorized.
Passed and approved this 12th day of February, 1991.
THE CITY OF WAYNE, NEBRASKA,
By Robert A. Carhart
Mayor
ATTEST:
Nancy L. Braden
Assistant City Clerk
(Publ. Feb. 18)

SECTION 3. Section 3-110 of the Wayne Municipal Code is amended to read as follows:

"MUNICIPAL WATER DEPARTMENT; TRAILER COURTS. All trailer courts licensed in the City of Wayne, Nebraska, shall be metered through one (1) master meter and the use tariff of rates shall be applied.
Section 6. Original sections 3-101, 3-108.01, 3-108.02, 3-110, and 3-122 are repealed.
Section 7. This ordinance shall take effect and be in full force from and after its passage, approval, publication or posting as required by law. Publication in pamphlet form is authorized.
Passed and approved this 12th day of February, 1991.
THE CITY OF WAYNE, NEBRASKA,
By Robert A. Carhart
Mayor
ATTEST:
Nancy L. Braden
Assistant City Clerk
(Publ. Feb. 18)

TOTAL	\$45,977.13
SINKING FUND	
Northern School Supply Co., shades - elem. addition, 246.75; Municipal Bond Underwriters, interest on notes, 7,130.00.	
TOTAL	\$7,376.75
DEPRECIATION ACCOUNT	
ProMICRO Systems, Inc., microfiche, 2,425.00.	
Doris Daniels, Secretary	
(Publ. Feb. 18)	

Deadline for all legal notices to be published by
The Wayne Herald is as follows:
5 p.m. Monday for Thursday's paper and
5 p.m. Thursday for Monday's paper.

WINSIDE BOARD OF EDUCATION PROCEEDINGS

February 13, 1991
 The Winside Board of Education met in its regular February meeting, Tuesday, February 12 with all members present.
 The president called the meeting to order and welcomed the guests.
 The minutes to the January meeting were read and approved.
 The claims were reviewed. Motion by Behmer, second by Hoffmann to allow the claims in the amounts indicated totaling \$98775.88. Motion passed unanimously.
 Annual Fund, annual for library, 14.00; ARO Publishing, library books, 200.76; AT and T Info Sys, phone service, 125.10; Badger State Chemicals, janitor supplies, 837.30; Barb Kolah, ticket taking, 10.00; Broome-Greer & Associates, Chapter II materials, 83.95; Business Management Service, data processing, 89.49; Campus Video Tours, library materials, 126.90; Carhart Lbr Co., building, repair supplies, 92.94; Carolina Biological Supp., teaching supplies, 72.49; Cornhusker Hotel, adm. exp., 96.00; Culligan, salt, 39.00; D M Lanis, plumbing supplies, 67.10; Dalton Music, music instrument repair, 10.00; Dudley's, cleaning, 3.11; Dudley's Laundry, cleaning, 2.56; Electrolux, repairs, 47.75; ESU - laser lease/purchase - T&I dept., 192.50; ESU 0 Data Processing, data processing, 59.10; Gene Jorgensen, bus part; 7.50; Activity Fund: adm. & board mileage & exp. - 215.62, instruction supplies, mileage - 101.10, office - postage & mileage - 68.12, interest on registered warrants - 1122.87, building - water heater, mileage - 273.88; Gessford, J B, Atmy, legal fees, 53.00; Hawthorne Ed Services, teaching supplies, 71.50; Hot Lunch Fund, federal & state reimb., 2,894.54; J W Pepper, of Minneapolis, 36.33; John Gahl, ticket taking, 60.00; JESCO, electrical supplies, 587.10; Joan Jensen, ticket taking, 10.00; Johnsons Inc., heating repair, 370.32; Jostens, diplomas, 163.17; K-N Energy, fuel, 6,447.44; Kathy Hladky, ticket taking, 10.00; Linwald, T&I supplies, 73.38; Marilyn Leighton, ticket taking, 20.00; Midwest Shop Supplies Inc., shop supplies, 53.77; Munson Sales, library books, 600.00; NE Library System, photocopies, 3.00; Norma Brockmiller, ticket taking, 20.00; Oberia's Market, cleaning supplies, 14.56; Orkin Pest Control, annual fee, 483.60; Pamida Inc., video tapes, 23.97; Payroll Fund, payroll, 75,175.17; Ron Leapley, ticket taking, 20.00; S and S Lumber Co., building upkeep materials, 47.30; Servall Towel and Linen, towel service, 443.32; SIRS, library books, 565.00; U S Postal Service, stamped envelopes, 481.00; United Learning, Chapter II materials, 163.50; US West Communications, phone, 450.47; Village of Winside, utilities, 2,075.33; Warnemunde Ins. Agcy, treasurers bond, 100.00; Wayne Family Practice, physical, 90.00; Wayne Herald, proceedings, 38.05; Western Typo and Office Su, copier lease; office supplies, 410.00; Winners' Circle, desk sets, 72.00; Winside Model, bus repairs, 467.54; Winside State Bank, safety box rent, 17.00; Western Paper, paper towels, 152.22; Farmers Coop, bus fuel, 1684.41; Ramada Inn, adm. exp., 37.00; Don Leighton, adm. exp. & mig., 321.75.
TOTAL98,775.88
 Other Board action:
 1. Voted to approve a free-holding petition by Mr. and Mrs. Robert Boelter.
 2. Approved the option request of Kathryn Upton from Winside School District to attend the Wayne Public School.
 3. Voted to waive the deadline for option students Bill and Kristie Gonzales from the Norfolk School to attend Winside School contingent upon agreement by the Norfolk School Board.
 4. Voted to waive the deadline for option students Laura and John Noel from the Wayne School to attend the Winside School.
 5. Verified the successful teaching experience of Curt Jeffries and Nancy Powers for the purpose of renewing teaching certificates.
 6. Passed a resolution to transfer excess bond fund receipts in the amount of \$9240.71 to the general fund and all future receipts in the same manner.
 7. Approved the 1991/92 school calendar with beginning date of August 25 and ending date of May 22.
 8. Approved the distribution formula for the LB 89 teacher help monies.
 Submitted by Jean Gahl
 Secretary to Board of Education
 (Publ. Feb. 18)

ALLEN BOARD OF EDUCATION PROCEEDINGS

The Allen Board of Education met in regular session at the Allen Public School at 7:30 p.m. on Monday, February 11, 1991.
 Regular Meeting called to order by Chairman Dale Jackson. Present: Dale Jackson, Stan McAfee, Diane Blohm, Larry Boswell. Absent: Myra McGrath, Barry Martinson.
 Also Present: John Werner, Superintendent; Glenn Kumm, Marcia Rastade and Carol Chase, Recording Secretary.
 Minutes of the January Meeting read by Supt. Werner. Minutes stand approved as read.
 Barry Martinson joined meeting at 7:40 p.m. Smoking policy discussed. Martinson moved to adopt the following option to Board Policy:
 "It shall be the policy of the Allen Public Schools to prohibit the use of all tobacco products in all school buildings and vehicles under the jurisdiction of the Allen Board of Education."
 Boswell seconded. Yes: McAfee, Boswell, Martinson, Jackson. No: Blohm. Motion carried 4-1.
 Chairman Jackson appointed the following committees: Negotiation Committee: McAfee, Jackson, Blohm. Curriculum Committee: Boswell, McGrath. Transportation Committee: Boswell, Martinson. Americanism Committee: All Board Members.
 Boswell moved to accept the Chairman's appointments of committees. Martinson seconded. Carried 5-0.
 Boswell moved to designate Security State Bank of Allen as the District Bank. McAfee seconded. Carried 5-0.
 McAfee moved to use the Wayne Herald as the official District newspaper. Blohm seconded. Carried 5-0.
 Superintendent Werner read the February bills. McAfee moved the February bills be paid as read. Martinson seconded. Carried 5-0.
 A B Dick Products Company, 70.56; American Family Insurance, 133.36; A T & T, 19.50; American Gear Company, -139.82; Beatrice State, 4,970.25; Capitol American, 64.90; Carol Chase, 34.25; Dixon Credit Card, 687.34; D C Heath, 26.29; Conex City Disposal Service, 110.00; Farmers Coop Elevator Co., 8,361.20; Franklin Life, 20.00; General Fund, 218.90; Guardian Insurance Co., 4,674.64; Hot Lunch Fund, 2,103.33; Houghton Millin Co., 152.52; Investors Life, 450.00; Wayne A. Jones, 1,920.02; Jewell Gazt Collins & Dreier, 199.20; Linwald (Lincoln Welding), 52.19; Midwestern Paper Co., 122.11; Nebraska Scientific, 8.90; Ne. School Retirement Sys., 9,211.15; Courtland Roberts, 1,621.74; Sargent-Welch Scientific, 70.49; Security State Bank, 15,793.51; Servall Towel & Linen, 21.80; Sioux City Stationery, 143.75; South-Western Publishing, 28.22; Silver Burdett & Ginn, 45.30; State of Nebraska, 1,593.09; TMC Long Distance, 54.85; U S West Communications, 202.52; Village of Allen, 190.00; Norma Warner, 1,258.83; Wayne Herald, 74.38; Debra Snyder, 30.00; Carol Werner, 17.67; Michael Johnson, 45.00; County Clerk, 45.50; Gary Troth, 40.00; General Fire & 48.93; Ne. Council of, 70.00; American Heart, 2.00; Ne. Journal-Leader, 78.50; Rhonda Warner, 40.00; Samuel French, Inc., 8.65; Eastman Kodak Company, 89.26; Tractor Supply Co., 124.52; Harcourt Brace, 63.03; Moore Medical Corp., 46.46; Total Payroll, 55,232.21.
TOTAL BILLS111,217.50
 Blohm moved to hire Carol Chase as Recording Secretary for Board of Education. McAfee seconded. Carried 5-0.
 Boswell moved to appoint John Werner as Designated Custodian of School Funds. Martinson seconded. Carried 5-0.
 Boswell moved to authorize Superintendent to sign as District Representative for all Federal Funds. McAfee seconded. Carried 5-0.
 Reports received from teachers Marcia Rastade and Glenn Kumm.
 Tentative Draft of requirements for a diploma from Allen Public Schools beginning with the Class of 1994 explained by Glenn Kumm. Tabled until later meeting.
 Summer Driver Education Program discussed. Boswell moved to set tuition for Summer Driver Education Program for 1991 at \$65.00 for residents and \$100.00 for non-residents with Glenn Kumm as Classroom Instructor at \$300.00 and 6 hours behind the wheel instruction/practice at \$60.00 per student. Martinson seconded. Carried 5-0.
 School Calendar for 1991-92 discussed. Blohm moved to approve the 1991-92 calendar. McAfee seconded. Carried 5-0.
 The following course offerings for SERC will tentatively be: Japanese I, Japanese II, Probability & Statistics, and Discrete Math. Boswell moved to allow the Allen School to participate in SERC for 1991-92 School Year and offer the above classes. McAfee seconded. Carried 5-0.
 Blohm moved to accept distribution of LB89 Funds as set by teachers. Martinson seconded. Carried 5-0.
 Boswell moved to recommend Marsha Prochaska and Susan VonMinden for renewal of Successful Teaching Experience. Blohm seconded. Carried 5-0.
 Blohm moved to form a consortium in conjunction with E.S.U. #1 to utilize Carl D. Perkins Vocational Funds. McAfee seconded. Carried 5-0.
 With no further business, meeting adjourned at 11:00 PM by Chairman Jackson.
 Carol Chase, Recording Secretary
 (Publ. Feb. 18)

WAYNE COUNTY COURT, RE, 147.53; NEBR. DEPT. OF REVENUE, RE, 1770.56; ICMA, RE, 1936.14; CITY OF WAYNE, RE, 48868.67; POSTMASTER, SU, 400.00; ZACH PROSTATE, SU, 17.98; SIOUX CITY BOTL, SU, 16.39; NEBR. DEPT. OF REVENUE, RE, 6819.51; NEBR. PUBLIC POWER DISTRICT, RE, 102347.46; CITY OF WAYNE, RE, 344.02; MEDICAL EXPENSES, RE, 759.72.

Wayne County Court, Re, 147.53; Nebr. Dept. of Revenue, Re, 1770.56; ICMA, Re, 1936.14; City of Wayne, Re, 48868.67; Postmaster, Su, 400.00; Zach Prostate, Su, 17.98; Sioux City Botl, Su, 16.39; Nebr. Dept. of Revenue, Re, 6819.51; Nebr. Public Power District, Re, 102347.46; City of Wayne, Re, 344.02; Medical Expenses, Re, 759.72.
 Council approved Kevin Koenig's appointment to the Wayne Volunteer Fire Department. A public hearing was held on the One and Six Year Street Improvement Program.
 Resolution 91-01 approving the One and Six Year Street Improvement Program was adopted.
 Council approved Ordinance No. 91-01 restricting parking from 3:00 o'clock A.M. to 5:30 o'clock A.M. on certain streets.
 Steve Rasmussen of the Nebraska Forestry Service reviewed his evaluation and assessment of the City's street and park trees.
 Marshall Kurschner and Larry Welsh of Jones Interchange gave a presentation and review of the changes that have taken place since the non-exclusive cable television franchise was transferred to Jones Interchange in 1988.
 City Planner Don Sletken gave a presentation on the 1990 building and planning activities that have taken place in the City.
 Council approved the mayoral appointment of Robert Woehler to replace Paula Plueger on the Planning Commission.
 Council entered into executive session at 8:50 P.M. for the purpose of discussing an option to purchase lots in Marywood Subdivision. Open session resumed at 9:37 P.M. Meeting adjourned at 9:37 P.M.
THE CITY OF WAYNE, NEBRASKA,
 By: Mayor
 ATTEST:
 City Clerk
 (Publ. Feb. 18)

ABBREVIATIONS FOR THIS LEGAL: EX, EXPENSE; FE, FEE; GR, GROCERIES; MI, MILEAGE; RE, REIMBURSEMENTS; RPT., REPORT; SA, SALARIES; SE, SERVICES; SU, SUPPLIES.

WAYNE CITY COUNCIL PROCEEDINGS

January 29, 1991
 The Wayne City Council met in regular session at 7:30 p.m. on January 29, 1991. In attendance: Mayor Carhart, Council members Heier, Fuehlberth, Barclay, Wieland, Fraher, Liniau and Hansen; Attorney Ensz; Administrator Salirros; Clerk Brummond. Absent: Councilmember O'Leary.
 Minutes of the regular meeting of January 8, 1991, were approved.
 The following bills were approved.
PAYROLL: 48668.67.
ADDITIONS AND CORRECTIONS TO 91-08-91 CLAIMS LIST: Medical Expenses from 1593.99 to 632.13.
VARIOUS FUNDS: A.B. Dick, Se, 480.00; Amintas Life Ins. Corp., Re, 641.84; AT&T, Su, 133.13; Norbert H. Brugger, Re, 222.00; Harold Burns, Su, 156.00; Carhart Lumber Co., 12.02; Delmar Carlson, Re, 117.00; Carter Elevator Co., Re, 235.50; City of Wayne Library, Su, 1467.11; Complete Computer, Su, 228.74; Corporate Diversified Services, Re, 74.00; Credit Bureau of Norfolk, Se, 8.07; Crescent Electric Supply Co., Su, 194.25; Curt Dahlkoetter, Su, 257.46; Dave's Body Shop, Re, 122.50; Dutton-Lainson Co., Su, 157.14; Ellington Motors, Inc., Su, 10.00; F. C. Clatterbaugh Co., Su, 1685.25; Flexcomp Planners, Re, 132.00; Hach Co., Su, 34.38; Harris Janitor, Su, 58.20; Howard R. Green, Se, 219.16; Internat'l Conf. Bldg. Officials, Fe, 75.00; J. P. Cooke Co., Su, 80.64; Johnstons Supply, Su, 48.46; Erna Karp, Re, 150.00; Kay's T.V., Re, 2.20; Kenner Engraving, Su, 3.95; Koplin Auto Supply, Re, 24.55; Kriz-Davis Co., Su, 507.26; KITCH AMFM, Se, 40.00; Robert Lamb, Re, 128.00; League of Nebr. Mun., Fe, 201.00; William Mellor, Re, 222.00; Mentor Inc., Se, 17.50; Michael Todd & Co., Su, 7.90; Midland Equip. Inc., Re, 3.00; Morning Shopper, Se, 141.50; Norfolk Iron & Metal, Su, 247.96; Northeast Nebr. Ins., Fe, 18270.00; Office Connection, Su, 27.77; Old & Ensz, Se, 950.00; Pac 'N' Save, Su, 35.65; Pamida, Inc., Su, 99.99; Phillips 66 Co., Su, 15.21; Plainsco, Inc., Su, 50.50; Presto-X-Co., Se, 24.50; Quality Food Center, Su, 33.00; Keith R. Reed, Re, 200.50; Ron's Radio, Re, 305.75; Leonard Schwanke, Re, 159.50; SD Myers, Se, 449.00; Seals & Service, Inc., Re, 325.00; Servall Towel, Se, 113.60; Skarshaug Testing Lab, Se, 56.24; Smeil Fire, Su, 173.96; Sorbus, Se, 246.94; State Nat'l Ins., Re, 1406.90; Travelers, Fe, 1290.90; S. Spirit, Se, 141.42; U.S. West, Se, 1285.68; Utility Equip. Co., Su, 196.00; Herbyn Wacker, Re, 222.00; Water Products of Nebr., Su, 442.36; Wayne Industries, Fe, 4000.00; Wayne Auto Parts, Re, 20.79; Wayne Co. Public Power, Re, 1310.25; Wayne County Treasurer, Su, 508.50; Wayne Herald, Se, 400.29; Wayne High Athletics, Se, 200.00; Wayne School Dist. #17, Re, 2370.90; Wayne Sporting Goods, Su, 32.80; Wayne's True Value, Su, 26.84; Western Area Power, Re, 11723.29; Wigan Co., Su, 1232.24; Zach Oil, Su, 1006.16; North Nebr. Optical Club, Su, 140.00; Wayne Co. Treasurer, Re, 22738.75; City of Wayne, Re, 130.83; Utility Refunds, Re, 637.56; Flexcomp Benefit Account, Re, 1097.87; State National Bank, Re, 16506.34.

Thai portion of the total user charge collected, which is designated for operation and maintenance, including replacement purposes as established in this section, shall be deposited in a separate non-escaping fund known as the "operation, maintenance, and replacement fund." The operation, maintenance, and replacement fund shall be a sub-fund of the "sewer fund." The operation, maintenance, and replacement fund will be maintained in two (2) primary accounts and sub-accounts as follows:
 A. An account designated for the specific purpose of deferring operation and maintenance costs, excluding replacement of the treatment works, known as the operation and maintenance account, provided that the City may separate sub-accounts known as the operation account and maintenance account.
 B. An account designated for the specific purpose of insuring replacement needs over the useful life of the treatment works, known as the replacement account. Deposits in the replacement account shall be made annually from the operation, maintenance, and replacement revenue in the amount of \$6,500.00.
 Fiscal year-end balances in the Operation and Maintenance Account and the Replacement Account shall be carried over to the same accounts in the subsequent fiscal year, and shall be used for no other purposes than those designated for these accounts. Monies which have been transferred from other sources to meet temporary shortages in the Operation, Maintenance, and Replacement Fund shall be returned to their respective accounts upon appropriate adjustment of the user charge rates. The user charge rate shall be adjusted such that the transferred monies will be returned to their respective accounts within the fiscal year following the fiscal year in which the monies were borrowed.
 Of the revenue collected, at least \$55,000.00 per year shall be allocated for debt service retirement, to be apportioned among the users according to the rates established in this section.
 Anything in this section to the contrary notwithstanding, the City shall have the right to issue additional bonds or notes payable from the revenues of its Sanitary Sewer System, said bonds being either revenue bonds, or notes or bonds payable from special or general taxes levied by the City. The City shall have the right to impose rates and charges sufficient to provide for the payment of debt service on such bonds or notes, and such reasonable reserves for such bonds and notes as the Mayor and Council deem appropriate.
 Anything in this section to the contrary notwithstanding, the City shall have the right to issue additional combined water and sanitary sewer revenue bonds, as provided by Nebraska State Statute.
 Section 2. Section 3-211.02 of the Wayne Municipal Code is amended to read as follows:
MUNICIPAL SEWER SYSTEM RATE SETTING. For the purpose of paying the cost of maintenance, operation and retiring the debt of the Sanitary Sewer System, including the waste water treatment plant of the City of Wayne, there shall be established, fixed, and imposed upon the users of said system, rates and charges for sewer service in said City.
 Each user shall pay for the services provided by the City based upon use of the treatment works, as determined by the water meter(s) acceptable to the City.
 For Wayne State College, the user charge shall be based on water used during the current month. If an industrial or institutional contributor has a consumptive use of water, or in some other manner, uses water which is not returned to the waste water collection system, the user charge for that contributor may be based on a waste water meter(s) or separate water meter(s) installed and maintained at the contributor's expense in any manner acceptable to the City. All contributors shall pay a charge as provided in Section 3-211.02 of the Wayne Municipal Code.
 Any user which discharges any toxic pollutants which cause an increase in the cost of managing the effluent or the sludge from the City's treatment works, or any works which discharges any substance, which singly or by interaction with other substances causes identifiable increases in the cost of operation maintenance or replacement of the treatment works, shall pay for such increased cost. The charge to each such user will be as determined by the responsible plant operation personnel, and approved by the City Council.
 The user charge system shall generate adequate revenue to pay cost of annual operation and maintenance, including replacement and costs for debt retirement of bonded capital associated with financing the treatment works which the City may, by ordinance, designate to be paid by the user charge system.

ORDINANCE NO. 91-05
 AN ORDINANCE PERTAINING TO THE MUNICIPAL SEWER SYSTEM; TO CHANGE RATES; TO CHANGE PROVISIONS RELATING TO THE WATER SEWER FUND; TO CHANGE PROVISIONS RELATING TO BILLING; AND TO REPEAL THE ORIGINAL SECTIONS.
 BE IT ORDAINED by the Mayor and Council of the City of Wayne, Nebraska.
 Section 1. Section 3-211.01 of the Wayne Municipal Code is amended to read as follows:
MUNICIPAL SEWER SYSTEM RATE SETTING. For the purpose of paying the cost of maintenance, operation and retiring the debt of the Sanitary Sewer System, including the waste water treatment plant of the City of Wayne, there shall be established, fixed, and imposed upon the users of said system, rates and charges for sewer service in said City.
 Each user shall pay for the services provided by the City based upon use of the treatment works, as determined by the water meter(s) acceptable to the City.
 For Wayne State College, the user charge shall be based on water used during the current month. If an industrial or institutional contributor has a consumptive use of water, or in some other manner, uses water which is not returned to the waste water collection system, the user charge for that contributor may be based on a waste water meter(s) or separate water meter(s) installed and maintained at the contributor's expense in any manner acceptable to the City. All contributors shall pay a charge as provided in Section 3-211.02 of the Wayne Municipal Code.
 Any user which discharges any toxic pollutants which cause an increase in the cost of managing the effluent or the sludge from the City's treatment works, or any works which discharges any substance, which singly or by interaction with other substances causes identifiable increases in the cost of operation maintenance or replacement of the treatment works, shall pay for such increased cost. The charge to each such user will be as determined by the responsible plant operation personnel, and approved by the City Council.
 The user charge system shall generate adequate revenue to pay cost of annual operation and maintenance, including replacement and costs for debt retirement of bonded capital associated with financing the treatment works which the City may, by ordinance, designate to be paid by the user charge system.

Section 3. Section 3-213 of the Wayne Municipal Code is amended to read as follows:
MUNICIPAL SEWER SYSTEM FEES AND COLLECTIONS; USER CHARGE REVIEW; SPECIAL ASSESSMENTS. Each user charged for sewer service shall pay to the City Clerk at the City Hall the amount due said City for the sewer use charge. The City Clerk is authorized and directed to render bills for said sewer service every month.
 If a bill is not paid by the due date, the gross bill shall apply, such bill shall become delinquent and the City reserves the right to discontinue service. Service disconnected for delinquency will not be reconnected until all charges, including a resumption of service fee of \$25.00, have been paid. Discontinuance of service procedures are specifically governed by Section 3-801 of the Wayne Municipal Code (Ref. 19-2702 et seq., RS Neb.)
 If a customer shall, for any reason, order the service discontinued or shall vacate the premise, the amount due, together with any fees and charges in arrears, shall be considered as a delinquent sewer rental, which is hereby declared to be a lien upon the premise or real estate for which, or from which, the sewer was used or supplied, and upon the refusal of the customer to pay the said delinquent sewer rental, it shall be collected by being placed upon the assessment roll and tax books for collection.
 At least once every year, the Mayor and City Council shall review the sewer user charge system in order to maintain its adequacy to pay the costs of operation and maintenance, including replacement costs and debt service.
 The City will bill each user, at least annually, in conjunction with a regular bill, of the rate being charged for operation and maintenance, including replacement of the treatment works.
 The Mayor and City Council shall have the power, by resolution, to establish fair and reasonable special assessments to the sewer users of said City to apply only in special cases which are not covered by the schedule of rates as provided in Section 3-211.02 of the Wayne Municipal Code.
 Section 4. Original Sections 3-211.01, 3-211.02 and 3-213 are hereby repealed.
 Section 5. This ordinance shall take effect and be in full force from and after its passage, approval and publication or posting as required by law. Publication in pamphlet form is authorized.
 Passed and approved this 12th day of February, 1991.
THE CITY OF WAYNE, NEBRASKA,
 By Robert A. Carhart
 Mayor
 ATTEST:
 Nancy L. Braden
 Assistant City Clerk
 (Publ. Feb. 18)

Section 3. Section 3-213 of the Wayne Municipal Code is amended to read as follows:
MUNICIPAL SEWER SYSTEM FEES AND COLLECTIONS; USER CHARGE REVIEW; SPECIAL ASSESSMENTS. Each user charged for sewer service shall pay to the City Clerk at the City Hall the amount due said City for the sewer use charge. The City Clerk is authorized and directed to render bills for said sewer service every month.
 If a bill is not paid by the due date, the gross bill shall apply, such bill shall become delinquent and the City reserves the right to discontinue service. Service disconnected for delinquency will not be reconnected until all charges, including a resumption of service fee of \$25.00, have been paid. Discontinuance of service procedures are specifically governed by Section 3-801 of the Wayne Municipal Code (Ref. 19-2702 et seq., RS Neb.)
 If a customer shall, for any reason, order the service discontinued or shall vacate the premise, the amount due, together with any fees and charges in arrears, shall be considered as a delinquent sewer rental, which is hereby declared to be a lien upon the premise or real estate for which, or from which, the sewer was used or supplied, and upon the refusal of the customer to pay the said delinquent sewer rental, it shall be collected by being placed upon the assessment roll and tax books for collection.
 At least once every year, the Mayor and City Council shall review the sewer user charge system in order to maintain its adequacy to pay the costs of operation and maintenance, including replacement costs and debt service.
 The City will bill each user, at least annually, in conjunction with a regular bill, of the rate being charged for operation and maintenance, including replacement of the treatment works.
 The Mayor and City Council shall have the power, by resolution, to establish fair and reasonable special assessments to the sewer users of said City to apply only in special cases which are not covered by the schedule of rates as provided in Section 3-211.02 of the Wayne Municipal Code.
 Section 4. Original Sections 3-211.01, 3-211.02 and 3-213 are hereby repealed.
 Section 5. This ordinance shall take effect and be in full force from and after its passage, approval and publication or posting as required by law. Publication in pamphlet form is authorized.
 Passed and approved this 12th day of February, 1991.
THE CITY OF WAYNE, NEBRASKA,
 By Robert A. Carhart
 Mayor
 ATTEST:
 Nancy L. Braden
 Assistant City Clerk
 (Publ. Feb. 18)

Section 3. Section 3-213 of the Wayne Municipal Code is amended to read as follows:
MUNICIPAL SEWER SYSTEM FEES AND COLLECTIONS; USER CHARGE REVIEW; SPECIAL ASSESSMENTS. Each user charged for sewer service shall pay to the City Clerk at the City Hall the amount due said City for the sewer use charge. The City Clerk is authorized and directed to render bills for said sewer service every month.
 If a bill is not paid by the due date, the gross bill shall apply, such bill shall become delinquent and the City reserves the right to discontinue service. Service disconnected for delinquency will not be reconnected until all charges, including a resumption of service fee of \$25.00, have been paid. Discontinuance of service procedures are specifically governed by Section 3-801 of the Wayne Municipal Code (Ref. 19-2702 et seq., RS Neb.)
 If a customer shall, for any reason, order the service discontinued or shall vacate the premise, the amount due, together with any fees and charges in arrears, shall be considered as a delinquent sewer rental, which is hereby declared to be a lien upon the premise or real estate for which, or from which, the sewer was used or supplied, and upon the refusal of the customer to pay the said delinquent sewer rental, it shall be collected by being placed upon the assessment roll and tax books for collection.
 At least once every year, the Mayor and City Council shall review the sewer user charge system in order to maintain its adequacy to pay the costs of operation and maintenance, including replacement costs and debt service.
 The City will bill each user, at least annually, in conjunction with a regular bill, of the rate being charged for operation and maintenance, including replacement of the treatment works.
 The Mayor and City Council shall have the power, by resolution, to establish fair and reasonable special assessments to the sewer users of said City to apply only in special cases which are not covered by the schedule of rates as provided in Section 3-211.02 of the Wayne Municipal Code.
 Section 4. Original Sections 3-211.01, 3-211.02 and 3-213 are hereby repealed.
 Section 5. This ordinance shall take effect and be in full force from and after its passage, approval and publication or posting as required by law. Publication in pamphlet form is authorized.
 Passed and approved this 12th day of February, 1991.
THE CITY OF WAYNE, NEBRASKA,
 By Robert A. Carhart
 Mayor
 ATTEST:
 Nancy L. Braden
 Assistant City Clerk
 (Publ. Feb. 18)

Terry Meyer 375-4272
MILO MEYER CONSTRUCTION INC.
Steve Meyer 375-4192
Mark Meyer 287-9016

- TREES
- FEEDYARDS
- TERRACES
- DAMS
- WATERWAYS
- BLADES
- SCRAPERS
- SITE DEVELOPMENT
- DOZERS
- LOADER

375-3440
WAYNE, NE SINCE 1951

NEW New 155-hp 4555
THE ALL-NEW CHOICE



AD9

- New 7.6 L high performance engine
- Perfect power size
- Easy handling
- Ready for instant delivery

LEADERSHIP AT WORK

LOGAN VALLEY IMPLEMENT INC.
EAST HWAY 35 - WAYNE
375-3325
OR TOLL FREE 1-800-343-3309

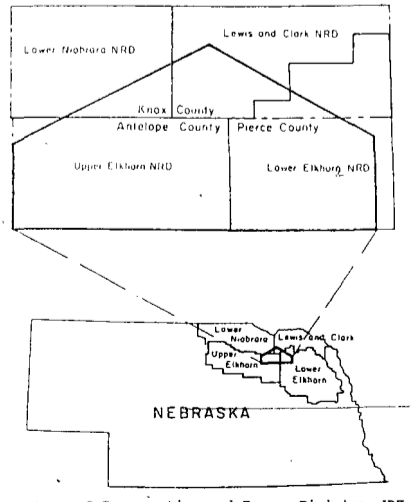
FEDERAL FUNDING APPROVED FOR WATER QUALITY PROJECT
Cost Share Assistance Available to Landowners

The U.S. Department of Agriculture has approved funding for a Water Quality Special Project in an area of northeast Nebraska known as the Bazile Triangle. The Bazile Triangle Water Quality Group requested the federal funds to provide cost-share assistance to landowners to encourage their use of irrigation water management and deep soil sampling for nitrogen management on their cropland. Portions of Antelope, Knox and Pierce counties that make up the Bazile Triangle are targeted for the special project because a 1989 study of the area indicates that 25 percent of the 125 wells sampled produced water with nitrate-nitrogen contamination greater than the maximum contaminant level allowed by the U.S. Environmental Protection Agency of 10 parts per million.

To kick off the project, a fertilizer consultants workshop was held last Friday at the Upper Elkhorn Natural Resources District office in O'Neill. The workshop presenters provided information that the consultants will need in order to become certified for this project. Topics included technical guidelines, soil probing and documentation.

The Bazile Triangle Water Quality Group members include the University of Nebraska-Lincoln Conservation and Survey Division, the Lewis and Clark, Lower Elkhorn, Upper Elkhorn and Pierce Counties, the Agricultural Stabilization and Conservation Service, the Cooperative Extension Service and Soil Conservation Service in Antelope, Knox and Pierce counties and area fertilizer dealers and consultants.

Landowners who would like more information about the project and cost-share assistance should contact their local Soil Conservation Service office.



(Diagram courtesy of Conservation and Survey Division, UNL)



Retiring Lower Elkhorn Natural Resources Director Glen Olson of Wayne, (left) receives an appreciation plaque from Board Chairman Bill Meyer of Pierce.

FOR THE HOME, THE FARM AND INDUSTRY
GERHOLD CONCRETE



Also A Full Line Of Precast Items

FOR FAST DEPENDABLE SERVICE & QUALITY CONCRETE PRODUCTS

- Ready mix concrete
- Concrete & lightweight block
- Suiwall surface bonding cement
- building materials
- Distributor of Tank or Hill
- Full line of finishing & masonry tools
- Bentonite

Call: 402-375-1101, Wayne, NE


ELECTRIFY!
 Conserve fuels in short supply

"LIVE AND FARM BETTER ELECTRICALLY"

Wayne County Public Power District
 Serving Wayne and Pierce Counties

LOGAN VALLEY IMPLEMENT INC.
EAST HWAY 35 - WAYNE
375-3325
OR TOLL FREE 1-800-343-3309

LOWER ELKHORN NATURAL RESOURCES DISTRICT



HELP WANTED

Full or Part Time Sales Career with Royal Neighbors of America, Fraternal Life Insurance Society
Training provided. Unlimited earnings potential. Openings available. Call Evelyn Rochford, RNA State Supervisor, 652-8490. F131

OPENINGS NOW AVAILABLE FOR NURSING ASSISTANTS
Training provided. Excellent benefits, stable staffing; our openings fill quickly — inquire now. **STANTON NURSING HOME** 439-2111 F211

HELP WANTED: Short shift and night help needed. Apply at Taco Stop, 509 Dearborn, Wayne, Ne. 375-4347. F183

HELP WANTED: Cashier day person, also donut maker early, early morning hours. Casey's General Store. F18f

ATTENTION! Be your own boss! Easy Work! Assemble products at home, direct pay to you, call now! 1-601-864-9944 ext. A164 24 hours. F182

QUALITY NURSING ASSISTANTS are needed for all shifts. We will pay you for the 75 hour Nurse Assistant Training Course. Apply in person to: Wakefield Health Care Center, 306 Ash St., Wakefield, Nebraska 68784. Jy23f

DAIRY QUEEN is taking applications for spring and summer. Apply at the Dairy Queen. F113

CLASSIFIED TOLL-FREE
1-800-672-3418

WANTED:
RN Full-Time Day Shift
Four 10 hour days per week. Enjoy 3 days off per week.
HERITAGE OF EMERSON
Emerson, NE 68733
Telephone 695-2683
Contact Shari Swanson, Administrator F218

NOTICE OF VACANCY
BUILDING SERVICES MECHANIC II. Hiring Rate \$1392/month, plus benefits. Applications are available by writing to the Administrative Services Office, Hahn 104, Wayne State College, Wayne, NE 68787, or by phoning 402/375-7485. Completed application form and letter of application are due in Hahn 104 by 5:00 p.m., Tuesday, February 26, 1991. Wayne State College is an Equal Opportunity/Affirmative Action Employer.

STAFF ACCOUNTANT
The M.G. Waldbaum Company has an excellent opportunity for an individual with experience in:
*fixed asset/depreciation schedules
*bank transfers
*reconciling accounts
*preparing journal entries
*knowledge of Lotus 123 preferred
*accounting degree or equivalent experience required
Qualified applicants may send their resume to: Personnel Department, The M.G. Waldbaum Company, 105 North Main, Wakefield, NE 68784. EOE/AA
MILTON G. WALDBAUM Company WAKEFIELD, NE 68784



FOR SALE

WIRE BALED straw for sale. 375-4098. F143

FOR SALE: 4 antique wooden printer's cabinets (old time letterpress vintage) with slots for shelving. Units measure 42 inches high and up to 72 inches wide. Also, an old 4-drawer wooden desk. All may be seen at The Wayne Herald. F1

FOR RENT

ONE BEDROOM apartment. Elderly or handicapped may apply. Stove and refrigerator furnished, carpeted. Leisure Apartments. Call 375-2322 or 1-800-762-7209. Equal Opportunity Housing. J21f

CARDS OF THANKS

I WOULD like to thank all of those that attended my open house on Feb. 2. Also for the many cards and letters I received. Ruth V. Jones, Grand Island. F18

WE SINCERELY wish to thank everyone for their kind expression of sympathy after the loss of our loved one. God's blessings to you all. The family of Melvin "Bud" Froehlich. F18

TO GIVE AWAY

GIVEAWAY: Puppies, English sheepdog, collie and blue heeler cross. 375-4308 after 5 p.m. F183

WANTED

WILL DO babysitting. Prefer drop-ins. Get acquainted by calling 286-4587 (Winsted). F143

WE RENT CARS!
Dependable new cars at affordable rates.
Arnie's FORD-MERCURY
PH. 375-3780
WAYNE, NE

SPECIAL NOTICE

SEND FOR free decorating and gift catalog. RR 2, Box 40, Randolph, NE 68771. 585-4889. F416

LOANS BY MAIL. Up to \$5000 in 72 hours. We can help you get a signature loan by mail. 1-900-468-7472. \$9.95 fee. F418

TRUMPET lessons after school in Wayne. Contact Jason Pentico at 337-0689 after 6 p.m. F143

CONGRATULATIONS! KARIN NERSTEN
WSC STUDENT
Winner of The Wayne Herald's Romantic Dinner for Two at Geno's Steakhouse & Lounge Valentine's Day, 1991.

EXTRA COPIES?
A limited number of the Persian Gulf War Special Sections are available on a first-come, first-serve basis at the Wayne Herald for 25¢ each.
Please add \$1.25 for postage and handling (1-4 copies) if necessary.

For Electronic filing of your tax return - Contact: Max Kathol & Associates., CPA - 375-4718 and ask for DiAnn.
We have more tax experience than any other electronic filer in the area.
We can, prepare an electronic return for 15% to 50% less than an equivalent electronic return prepared by H & R Block.
In the past, many of you were not able to take advantage of electronic filing because your preparer charged extra for it. Now everyone who qualifies can benefit from electronic filing.
Taxes are a full time business for us, that means if you ever need help after April 15th we will be here to help you.
We are the only area electronic filer open all year long.
Piper Electronic Filing allows the preparers to avoid charging the tax payer Extra for electronic filing — so insist on Piper filing — any other type of electronic filing is like paying more taxes.....
MAX KATHOL, CPA
104 West 2nd Street Wayne, Nebraska

ibp
If you are looking for a job in the beef packing industry, come to work for one of the safest in the industry. IBP, Inc. the world's largest processor of beef and a growing force in pork processing is currently conducting interviews for full and part-time production workers in our slaughter division. On the job training starting wage \$6.65 per hour with an opportunity to increase to \$9.35 per hour. Benefits include medical insurance, paid vacation, paid holidays, savings and retirement. Safety incentive programs. Candidates who feel qualified apply in person Monday through Friday, 8 a.m. to 4 p.m. Guaranteed 40 hour work week. E.O.E., M/F. Apply West Point, Nebraska.

HEALTH CARE DIRECTORY

DENTIST
DR. GEORGE H. GOBLIRSCH, D.D.S.
110 Main Street
Wayne, Nebraska
Phone 375-3200

PHARMACIST
WILL DAVIS, R.P.
375-4249
SAV-MOR PHARMACY
Phone 375-1444

WAYNE DENTAL CLINIC
S.P. BECKER, D.D.S.
611 North Main Street
Wayne, Nebraska
Phone: 375-2889

PHYSICIANS
BENTHACK CLINIC
Robert B. Benthack, M.D.
Benjamin J. Martin, M.D.
Gary J. West, PA-C
215 West 2nd Street
Wayne, Nebraska
Phone: 375-2500

OPTOMETRIST
WAYNE VISION CENTER
DR. DONALD E. KOEBER
OPTOMETRIST
313 Main St.
Phone 375-2020 Wayne, NE

NORFOLK MEDICAL GROUP, P.C.
900 Norfolk Avenue
402 / 371-3160
Norfolk, Nebraska
General Surgery: G.D. Adams, M.D., FACS; D.F. Hehner, M.D., FACS. Pediatrics: R.P. Votta, M.D., FAAP, D. Blumenberg, M.D., FAAP; Family Practice: T.J. Biga, M.D.; L.G. Handke, M.D.; W.F. Becker, M.D., FAAP; F.D. Dozon, M.D. Internal Medicine: W.J. Lear, M.D., D. Dudley, M.D.; Psychiatry: V. Canganeli, M.D.
Satellite Clinics - Pierce-Madison-Stanton

FAMILY VISION CENTER
Quality & Complete Vision Care
818 Ave. E
Wisner, Nebraska
529-3558

WAYNE FAMILY PRACTICE GROUP P.C.
Willis L. Wiseman, M.D.
James A. Lindau, M.D.
Dave Felber, M.D.
214 Pearl Street
Wayne, NE 375-1600
Hours: Monday-Friday 8-12 & 1:30-4:30, Saturday 8-12

MAGNUSON EYE CARE
Dr. Larry M. Magnuson
Optometrist
509 Dearborn Street
Dearborn Mall
Wayne, Nebraska 68787
Telephone: 375-5160

WAYNE PLUMBING
Call 24 hrs. a day for all your plumbing needs. Licensed-Responsible Rates. 1988 Milford grad with 2 yrs. experience. **SATISFACTION GUARANTEED**
375-4322

BUSINESS & PROFESSIONAL DIRECTORY

ACCOUNTING
MAX KATHOL
Certified Public Accountant
104 West 2nd
Wayne, Nebraska
375-4718

REAL ESTATE
Farm Sales • Home Sales
Farm Management
MIDWEST Land Co.
206 Main-Wayne-375-3385

CONSTRUCTION
OTTE CONSTRUCTION COMPANY
General Contractor
Commercial • Residential
Farm • Remodeling
East Highway 35
Wayne, NE 375-2180

SERVICES
WHITE HORSE
SHOE REPAIR & GAS STATION
502 MAIN ST.
WAYNE
Leatherwork
Shoe Repair
Men's & Women's Hair
Same Day Service
Quality Work at Lowest Prices!

NORTHEAST NEBRASKA BUILDERS
Box 444, 219 Main Street
Wakefield, NE 68784
Office: (402) 287-2687
Home: (402) 375-1634

LUEDER'S G-MEN
REFUSE SERVICE
RESIDENTIAL PICKUP
\$11.00 a month
CALL LARRY 375-3225
Send Payments to Box 275
Grass and/or leaves pickup must be scheduled for Mondays only. Contact Lueder's G-Men for special pickup.

FINANCIAL PLANNING
GEORGE PHELPS
Certified Financial Planner
416 Main Wayne 375-1848
IDS
An American Express Company

THE PRUDENTIAL
"Going Above & Beyond"
MATTHEW W. POLHAMUS
220 WEST 7TH
WAYNE, NE 68787 375-5616

D & D PEST CONTROL & EXT.
Dellis or Patsy Dimmick
Rt. 1, Box 168
Phone 605-565-3101 or 712-277-5148

New York Life Insurance Company
Jack L. Hausmann
112 West 2nd
Wayne, NE 68787
375-5414

HEIKES AUTOMOTIVE SERVICE
Major & Minor Repairs
Automatic Trans. Repair
Radiator Repairs
24 Hour Wrecker Service
Goodyear Tires
419 Main Street Wayne
PHONE: 375-4385

INSURANCE
Independent Agent
DEPENDABLE INSURANCE
for all your needs call:
375-2696
PIA N.E. NEBRASKA INS. AGENCY
Wayne 111 West 3rd

MITCHELL ELECTRIC
WAYNE
375-3566

KEITH JECH INSURANCE AGENCY
IF THINGS GO WRONG! INSURANCE CAN HELP!
316 Main 375-1429 Wayne

COLLECTIONS
BANKS • MERCHANTS
DOCTORS • HOSPITALS
RETURNED CHECKS
ACCOUNTS
Action Credit Corporation
Wayne, NE 68787
(402) 375-4609

FIRST NATIONAL AGENCY
Gary Boehle
Steve Muir
303 MAIN
WAYNE
PHONE: 375-2511

HABROCK APPRAISAL SERVICE
Rural & Residential Property Appraisals
P.O. Box 133
Emerson, NE 68733
Phone: 402-695-2714
Jennifer Habrock
Nebraska Licensed Appraiser

State National Insurance Agency
Let us protect & service your insurance needs...
Mineshaft Mall - Wayne
Marty Summerfield
Work 375-4888 Home 375-1400

TRUCKING
DEITLOFF TRANSFER
Agent For North American Van Lines
1012 Monroe Ave. Norfolk, NE 68701
"Over 30 Years of Moving Experience"
WILLIAM G. (BILL) MOORE
Sioux City
Manager and Sales
402-494-5562
•NORFOLK 402-379-0770
•OMAHA 402-338-4537
•O'NEILL 402-338-4149
•WATS 1-800-248-5820
OVERNIGHT LTL SERVICE OMAHA & SIOUX CITY

PLUMBING
For all your plumbing needs contact:
JIM SPETHMAN
375-4499
SPETHMAN PLUMBING
WAYNE, NEBRASKA

EMERGENCY.....911
POLICE.....375-2626
FIRE.....CALL 375-1122
HOSPITAL.....375-3800
CNTY SHERIFF..3751911